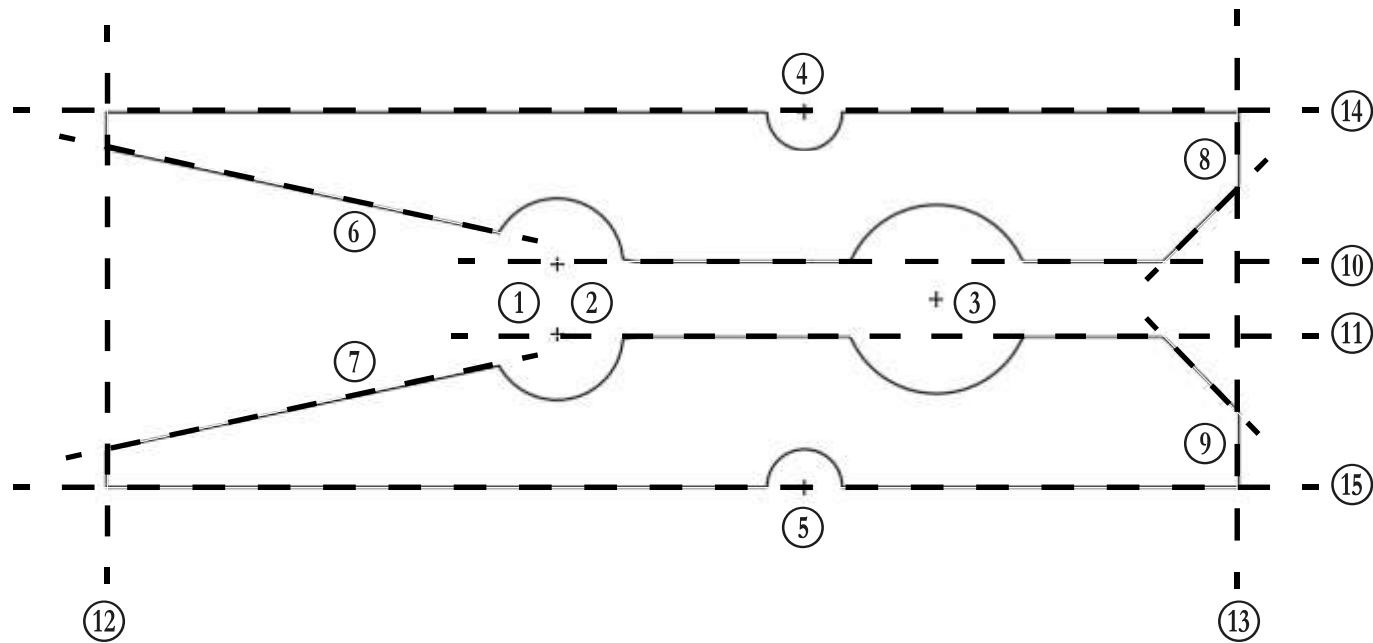


Sequence of cuts for Scroll Saw.



References:

- 1) Make hole $\varnothing 3.5\text{mm}$ (1)(2)
- 2) Make hole $\varnothing 5\text{mm}$ (3)
- 3) Make hole $\varnothing 2\text{mm}$ (4)(5)
- 4) Cut straight in this order (6)(7)(8)(9)(10)(11)(12)(13)(14)(15)

Important comment: You can also choose to cut in any other way, but believe me when it comes to cutting two tiny pieces (30mm x 4mm each) the sequence I propose will help you.