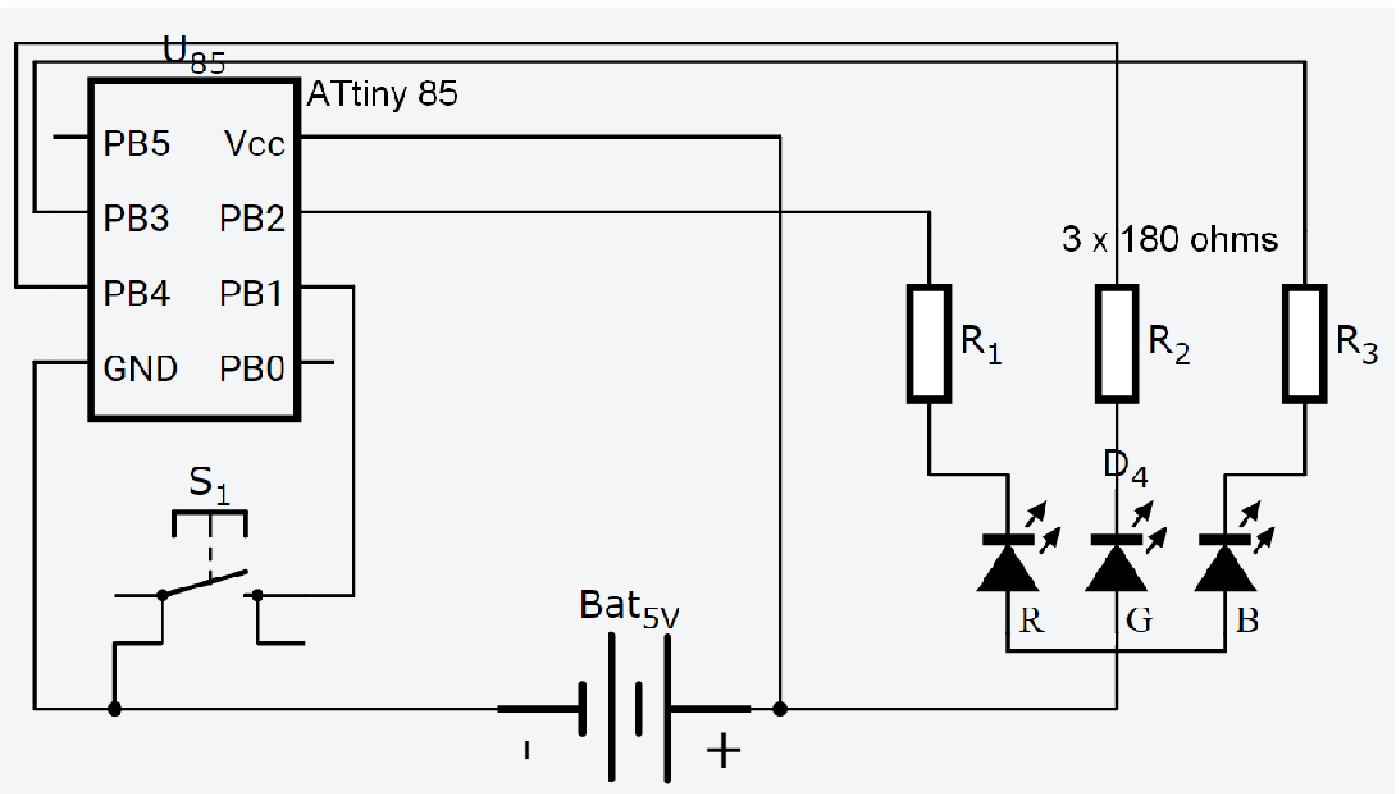
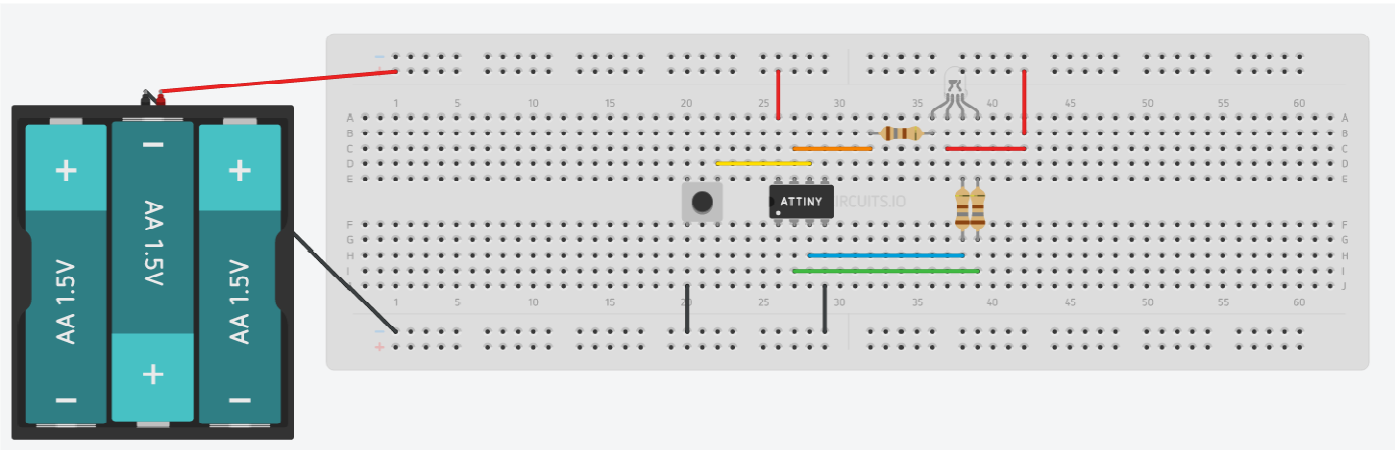


MagicManu - Barbie wood stove - RGB Led + ATTiny 85

Video : <https://youtu.be/kuuCpAYcWfs>



```

int ledPinRed = 2;
int ledPinGreen = 3;
int ledPinBlue = 4;
int buttonPin = 1;
int StateButton;
int toggle = 0;
int Switch = LOW;
int Red = 255;
int Green = 255;
int Blue = 255;
int Dura = 0;

void setup()
{
    pinMode(ledPinRed, OUTPUT);
    pinMode(ledPinGreen, OUTPUT);
    pinMode(ledPinBlue, OUTPUT);
    pinMode(buttonPin, INPUT);
    digitalWrite(buttonPin, HIGH);
}

void loop()
{
    StateButton = digitalRead(buttonPin);

    if (StateButton == LOW){
        if (toggle == 1) {
            Switch =! Switch;
            toggle = 0;
        }
    }
    else
        toggle = 1;

    if (Switch){
        Red = random(0, 170);
        Green = random(0, 170);
        Dura = random(150);

        // The fire is red or yellow with blue flashes (spark)
        if (Red < 60){
            Blue = 255;
            Green = 255;
        }
        else if (Red > 155){
            Red = 255;
            Green = 255;
            Blue = 0;
            if (Dura > 50)
                Dura = 50;
        }
        else{
            Red = Green;
            Blue = 255;
        }
    }
    else{
        Red = 255;
        Green = 255;
        Blue = 255;
    }

    analogWrite(ledPinRed, Red);
    analogWrite(ledPinGreen, Green);
    analogWrite(ledPinBlue, Blue);
    delay(Dura);
}

```

