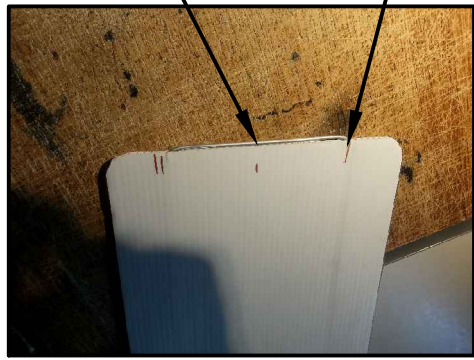


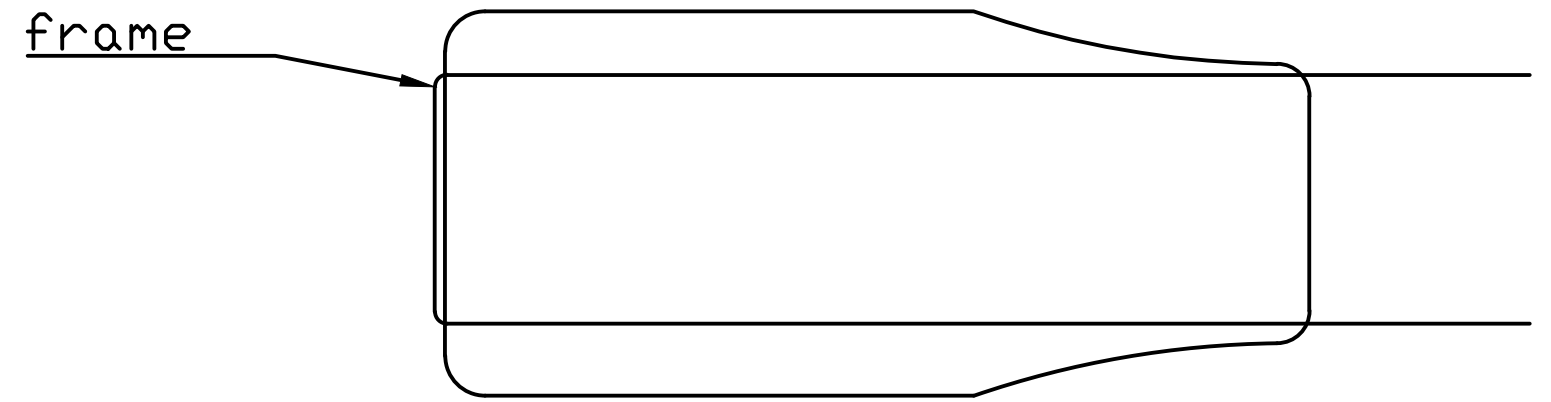
INSTRUCTIONS - PAGE II (IF THERE ARE INCONSISTANCYS IN THE PICTURES, IT IS BECAUSE I MADE ADMENDMENTS TO THE DESIGN AND CORRECTED FOR MISSED STEPS)

FRAME STEP 1: MARK OUT THE CHANNELS IN WHICH YOU WILL SLIDE THE FRAME

match center of rod to center of frame sheet



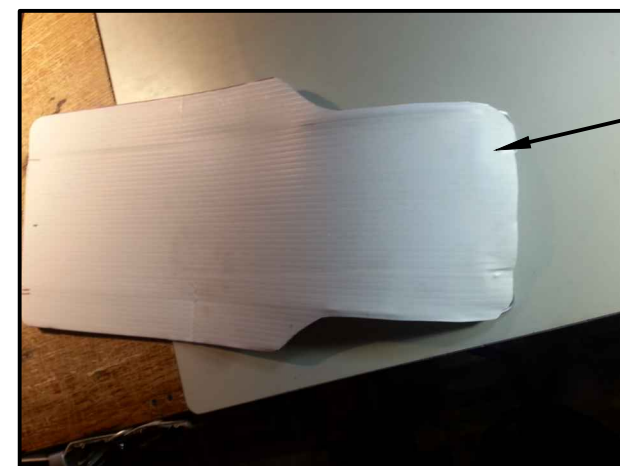
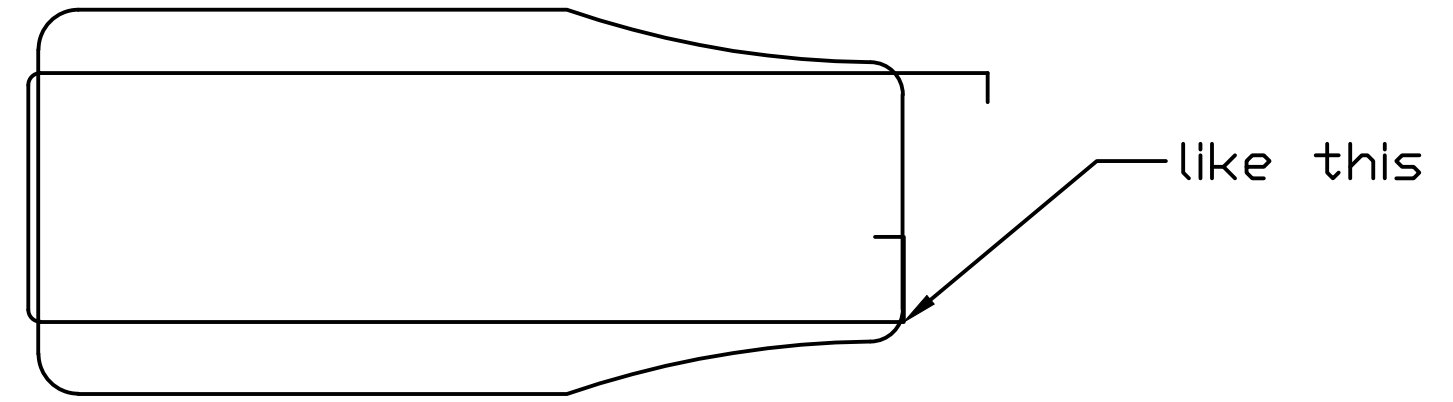
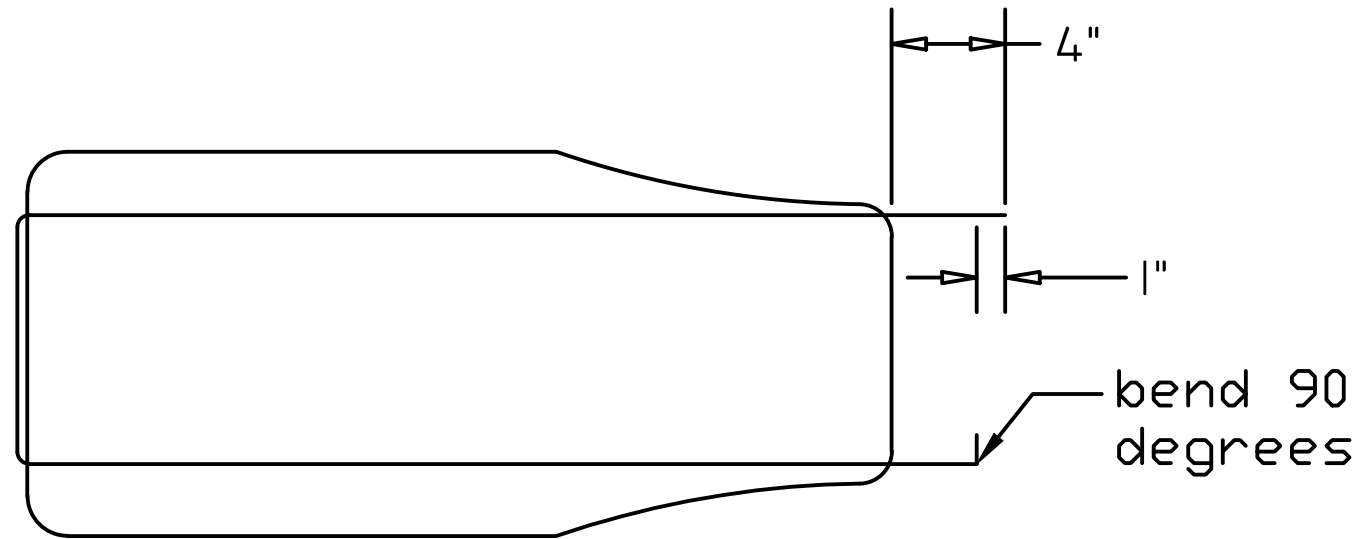
bend rod to fit into channels and insert leaving plenty coming out of the bottom



PRODUCED BY AN AUTODESK EDUCATIONAL PRODUCT

PRODUCED BY AN AUTODESK EDUCATIONAL PRODUCT

FRAME STEP 2: CUT THE ENDS OF THE FRAME 4" PAST THE FRAME SHEET, FILE SMOOTH AND ROUND. BEND THE TIPS OF THE BOTTOM OF FRAME AT 1" FROM THE END. BEND ROD AT FRAMESHEET AND TUCK ENDS INTO CORRUGATION.



tips of rod inset into corrugations.