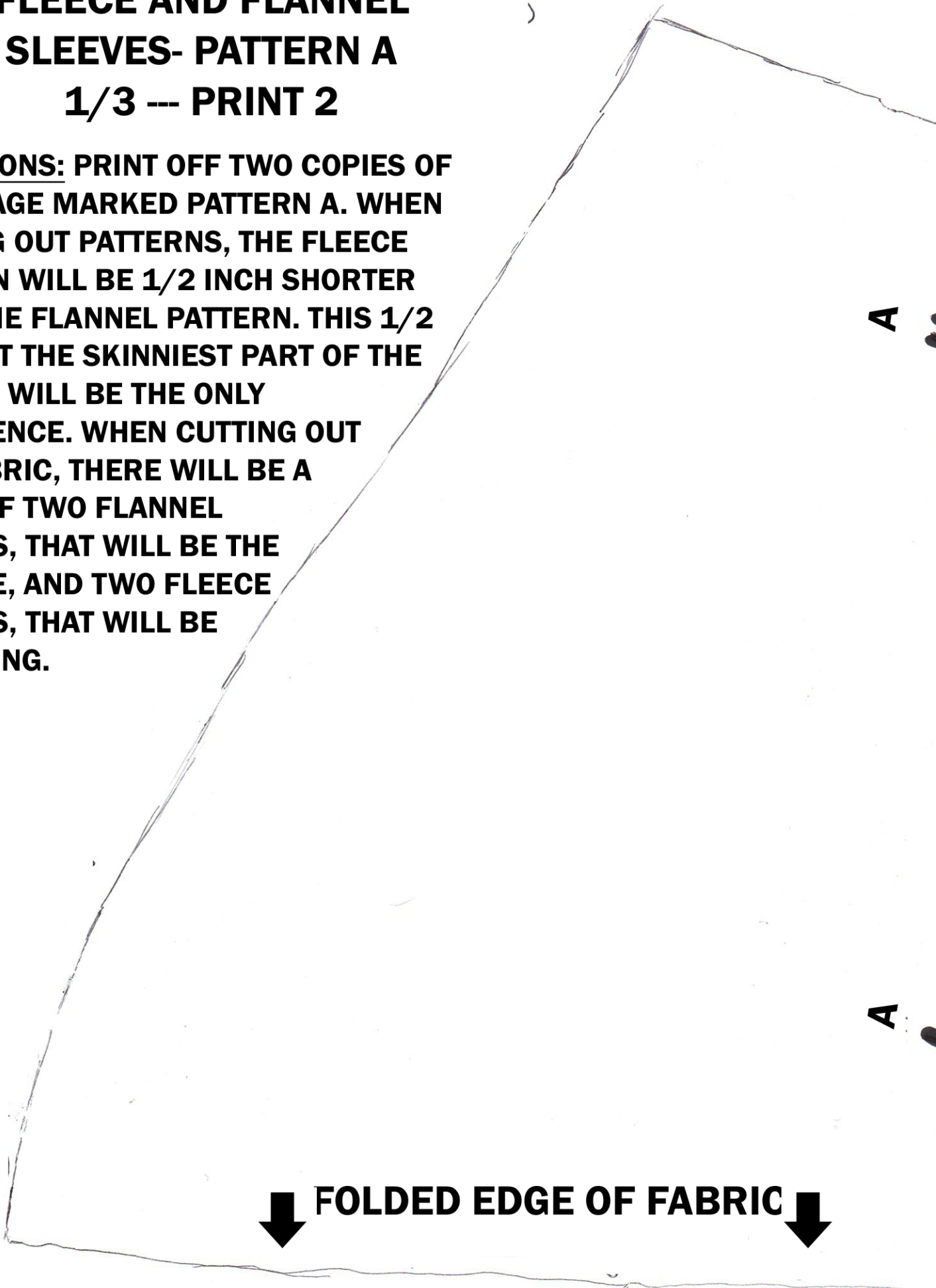


# FLEECE AND FLANNEL SLEEVES- PATTERN A 1/3 --- PRINT 2

**DIRECTIONS:** PRINT OFF TWO COPIES OF EACH PAGE MARKED PATTERN A. WHEN CUTTING OUT PATTERNS, THE FLEECE PATTERN WILL BE 1/2 INCH SHORTER THAN THE FLANNEL PATTERN. THIS 1/2 INCH (AT THE SKINNIEST PART OF THE SLEEVE) WILL BE THE ONLY DIFFERENCE. WHEN CUTTING OUT THE FABRIC, THERE WILL BE A TOTAL OF TWO FLANNEL SLEEVES, THAT WILL BE THE OUTSIDE, AND TWO FLEECE SLEEVES, THAT WILL BE THE LINING.



**↓ FOLDED EDGE OF FABRIC ↓**