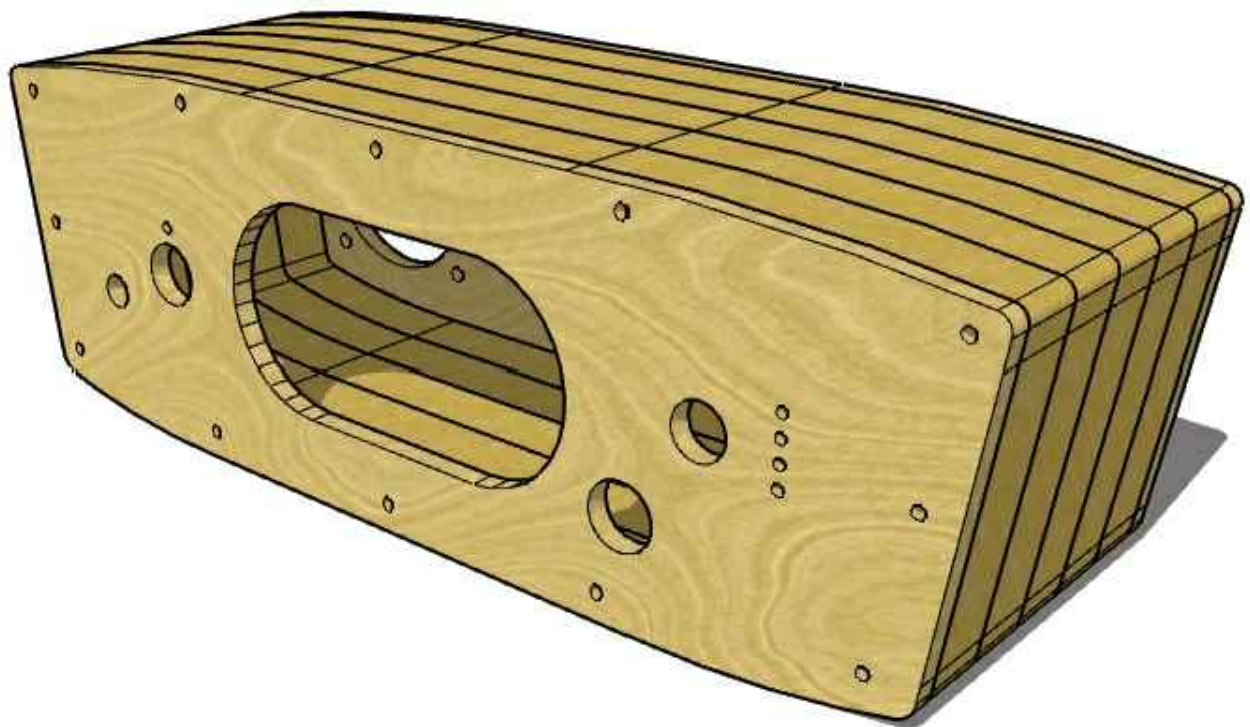
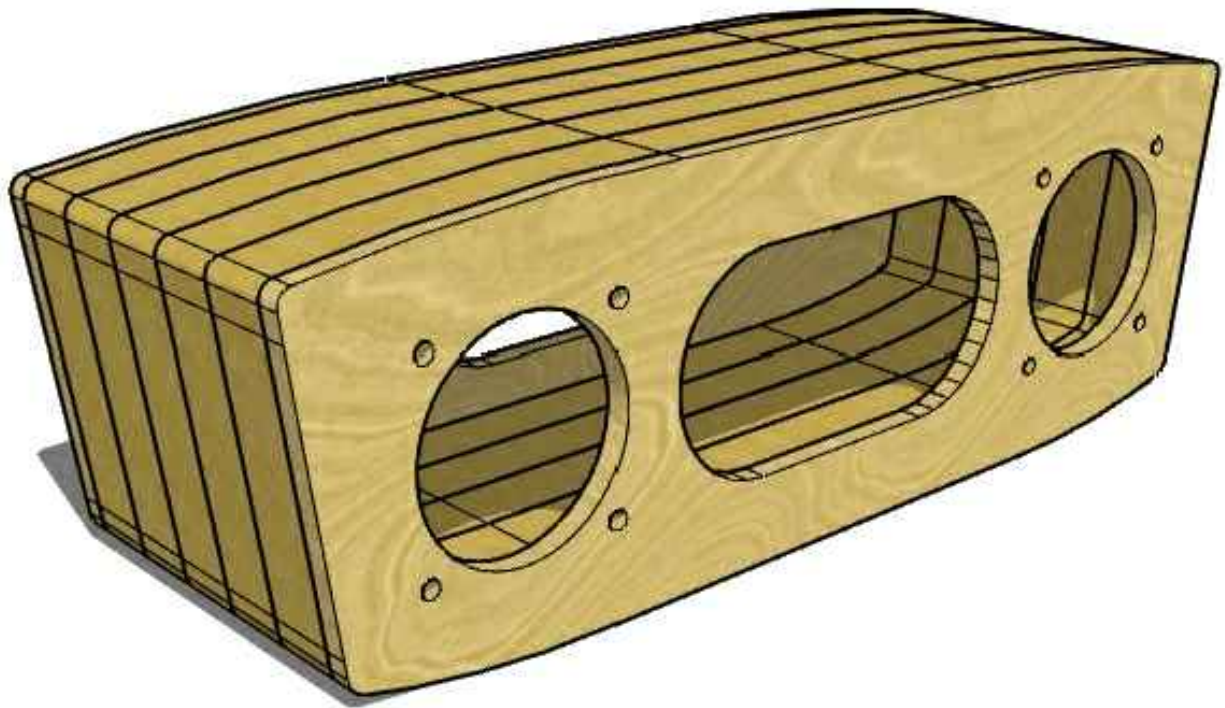




Portable Bluetooth Speaker Plans



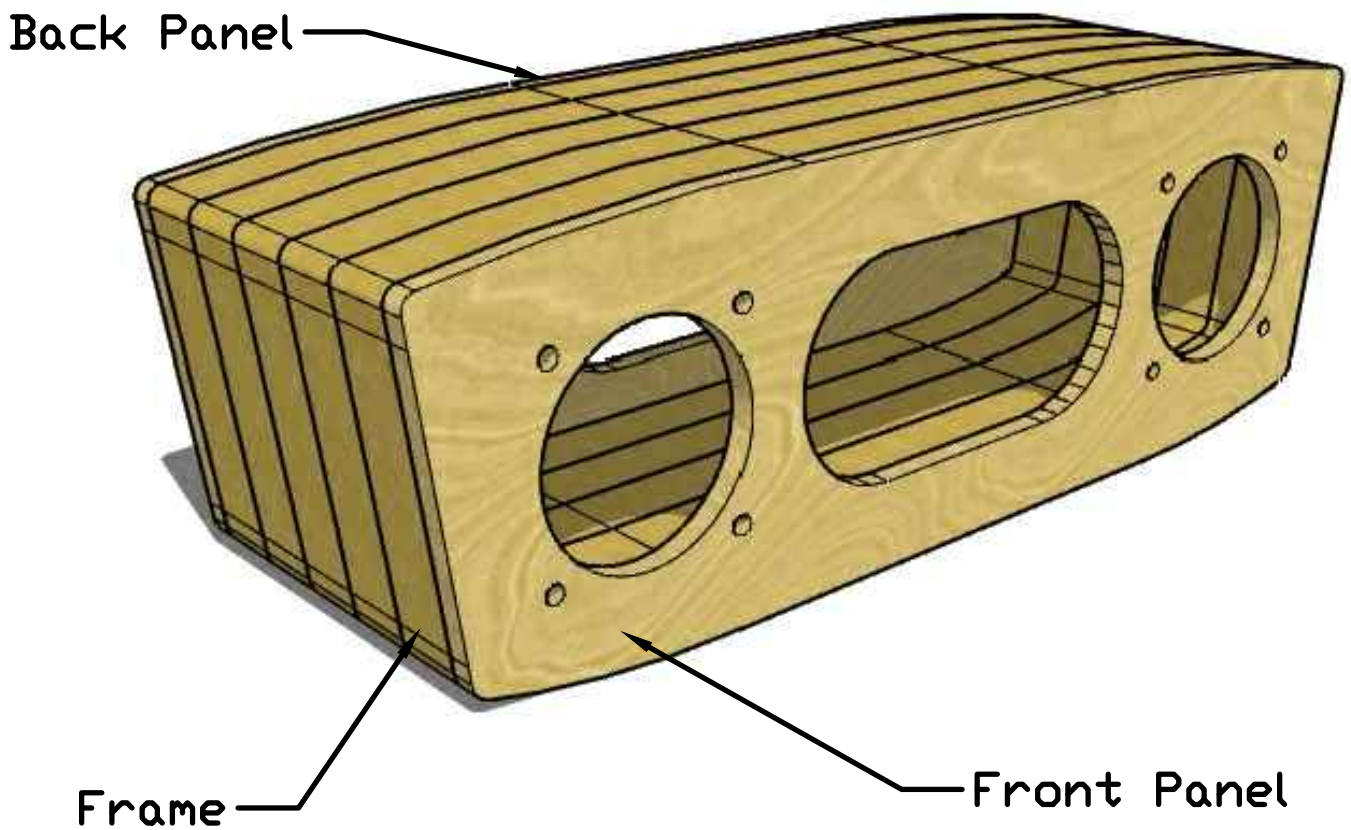
DRAWN BY:
Donny Terek

YOUTUBE CHANNEL:
[youtube.com/c/DonnyTerek](https://www.youtube.com/c/DonnyTerek)

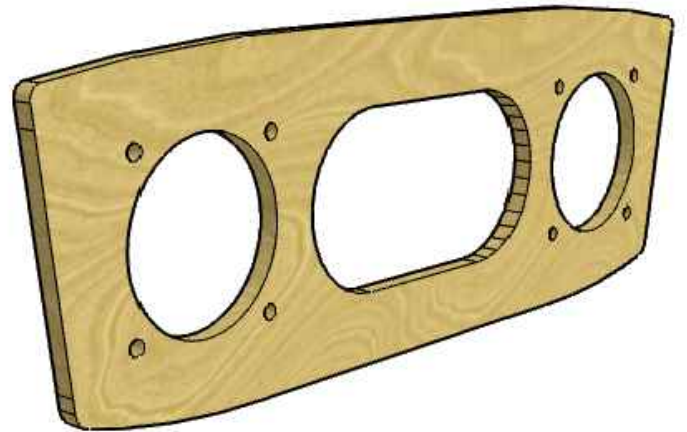
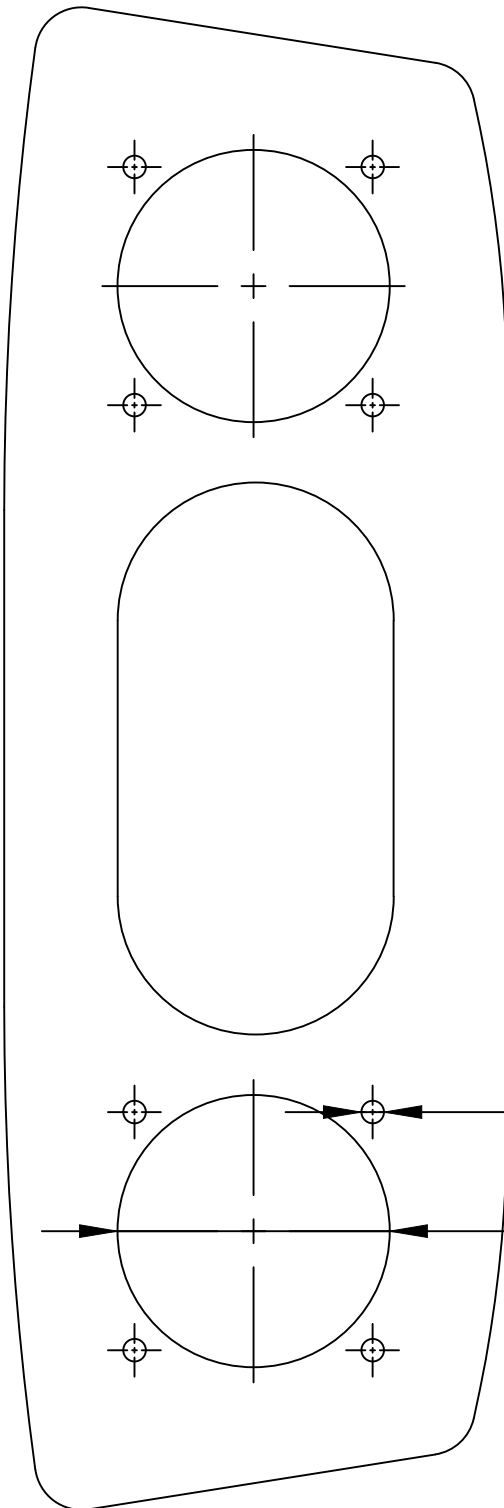
SHEET
1 OF 6

Portable Bluetooth Speaker Plans

ITEM NO.	PART NAME	Default/QTY.
1	Front Panel	1
2	Frame	5
3	Back Panel	1



Part name: Front Panel



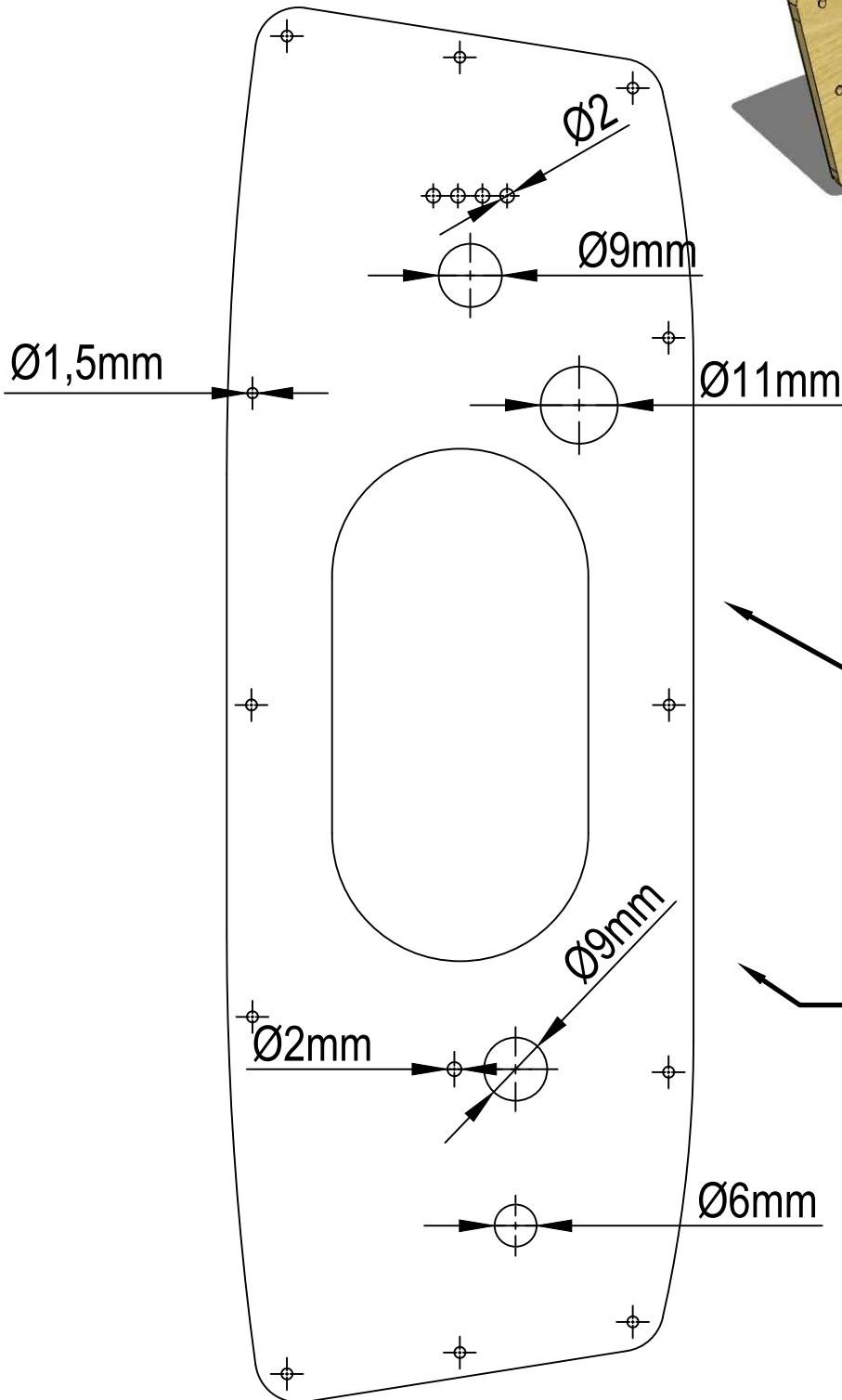
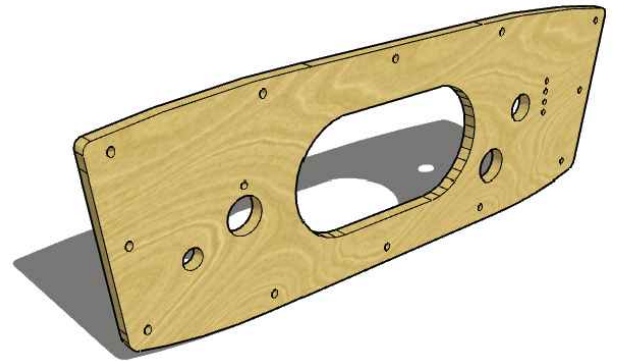
Glue the paper sheet onto a 4mm plywood sheet.

Use the lines as guides to cut out the front panel. Drill holes to allow the speakers and passive radiator.

Ø3mm

Ø36mm

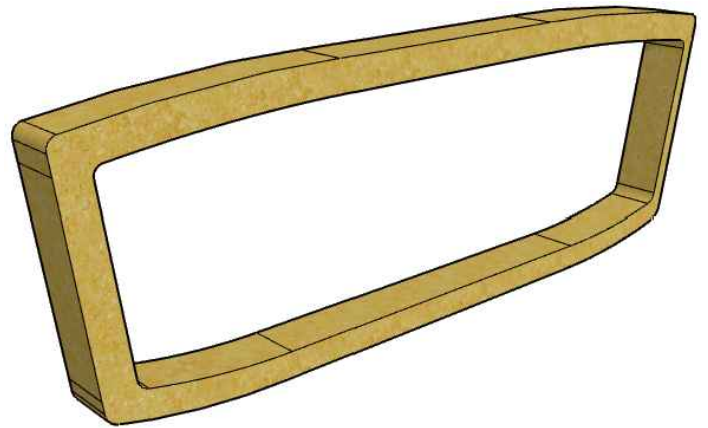
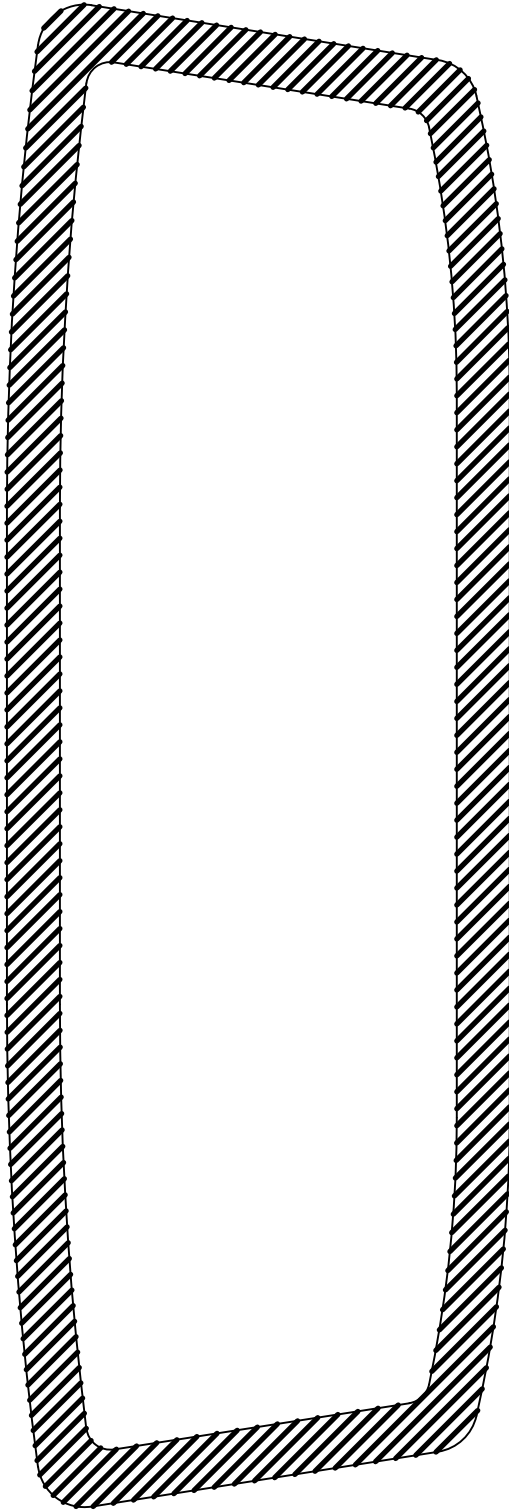
Part name: Back Panel



Glue the paper sheet onto a 4mm plywood sheet

Use the lines as guides to cut out the back panel. Drill holes to allow for switches, jacks, LEDs, passive radiator and screws.

Part name: Frame

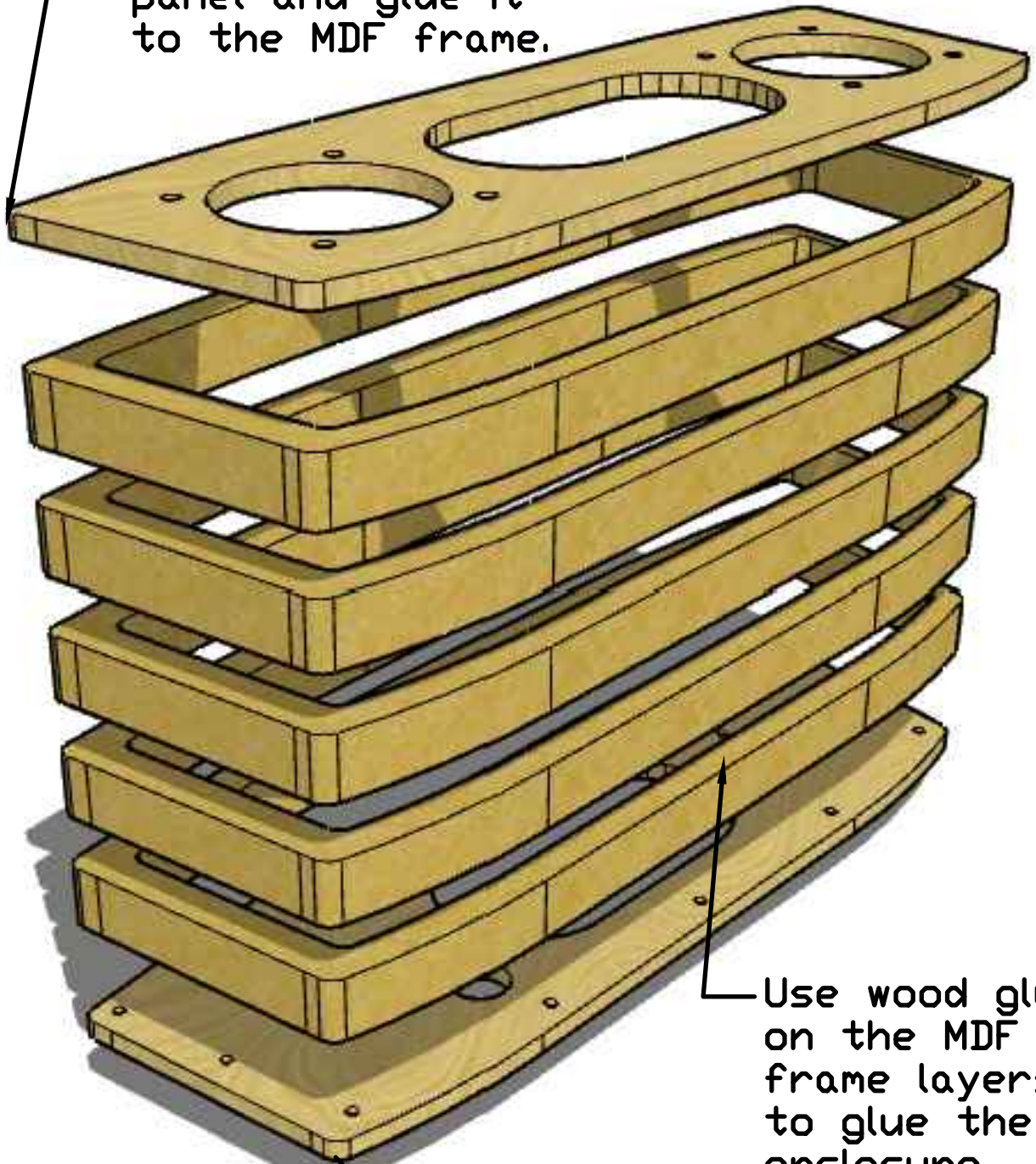


Glue the paper sheet onto a 12mm MDF board.

Using a jig saw, cut around the crossed area to create the Frame part.
Repeat this step to create 5 copies.

Assembly

Use wood glue on the back side of the front panel and glue it to the MDF frame.



Use wood glue on the MDF frame layers to glue the enclosure together.

Use screws to attach the back panel to the MDF frame.