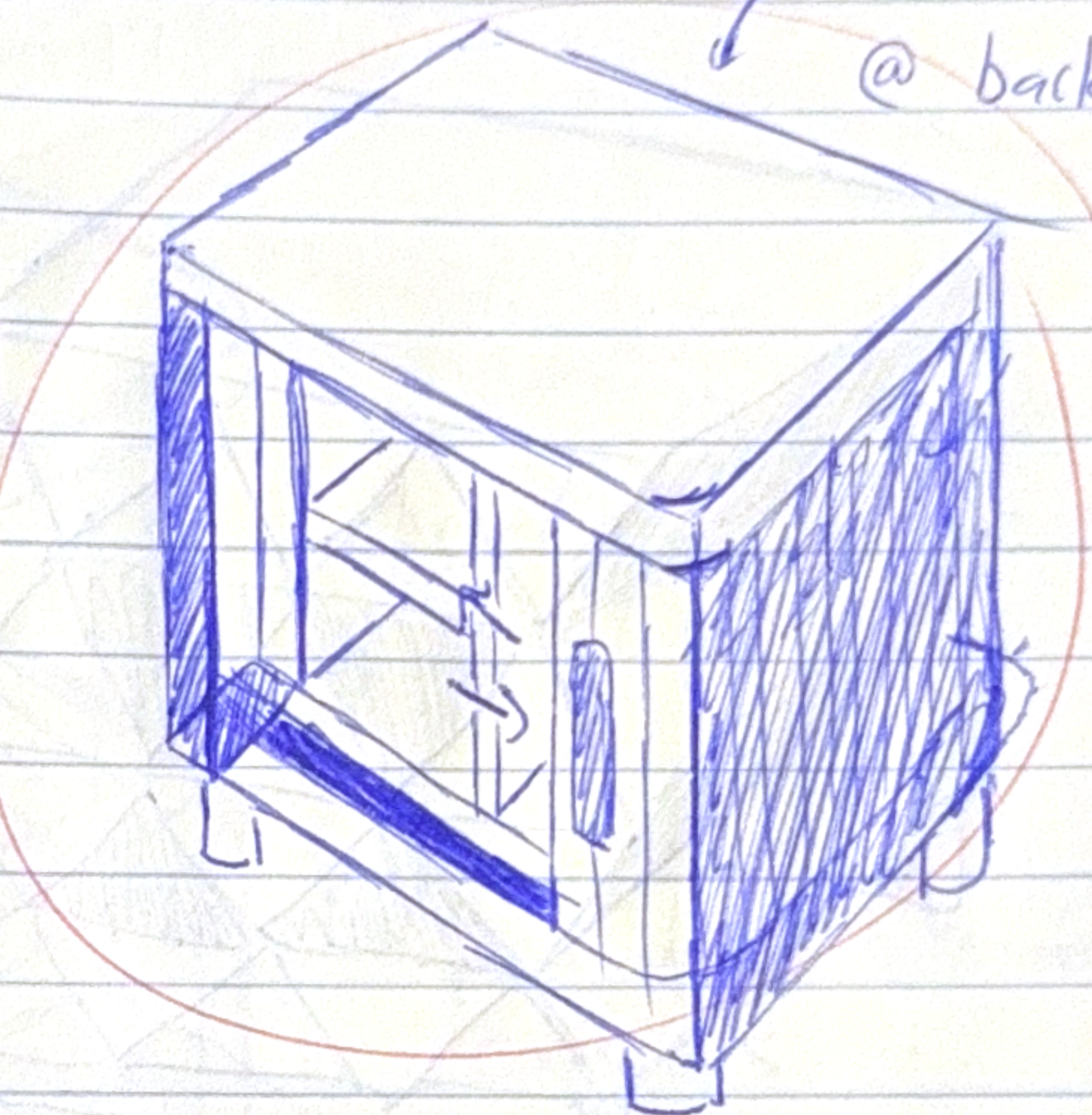
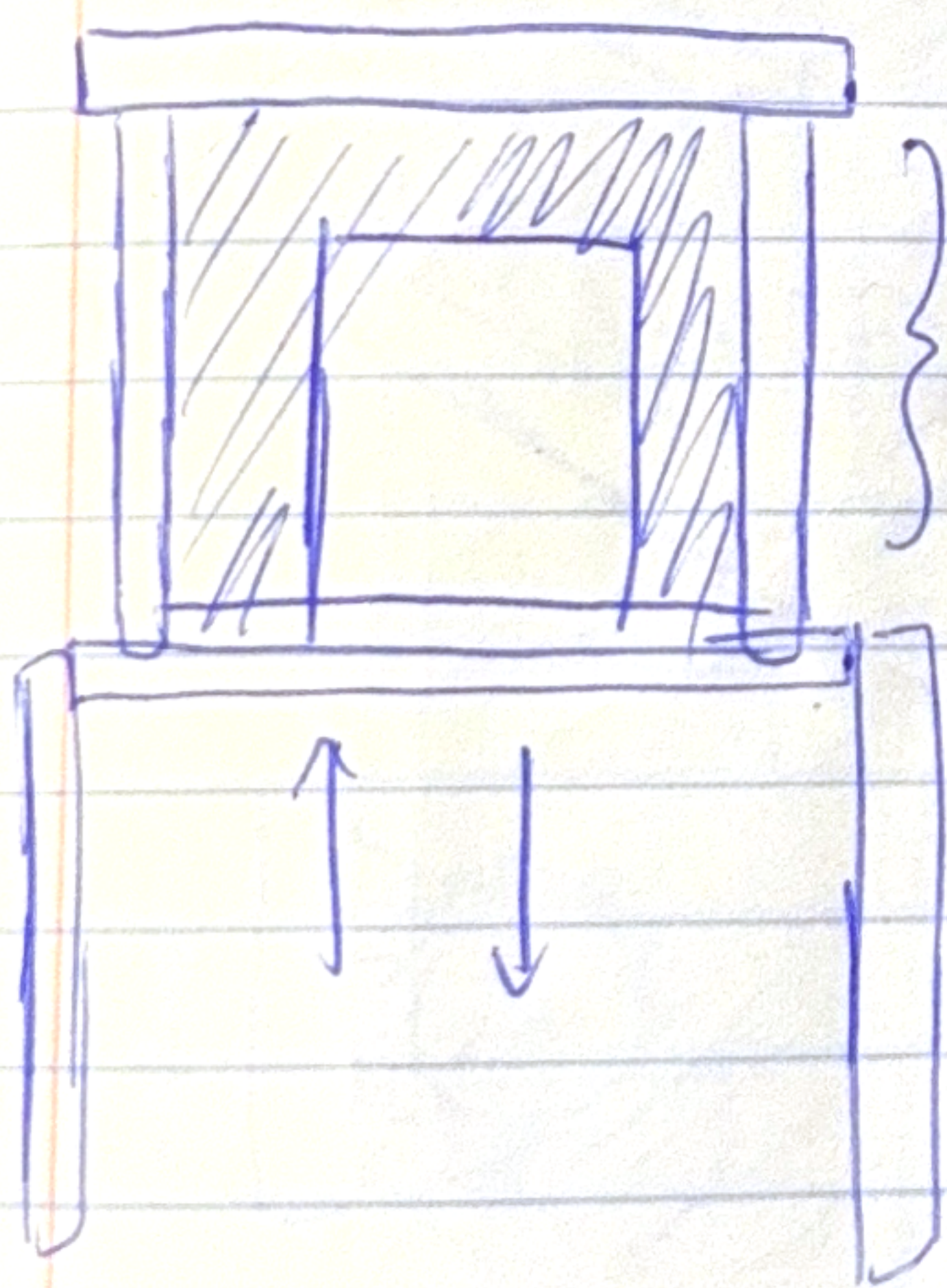


honeycomb of 2x

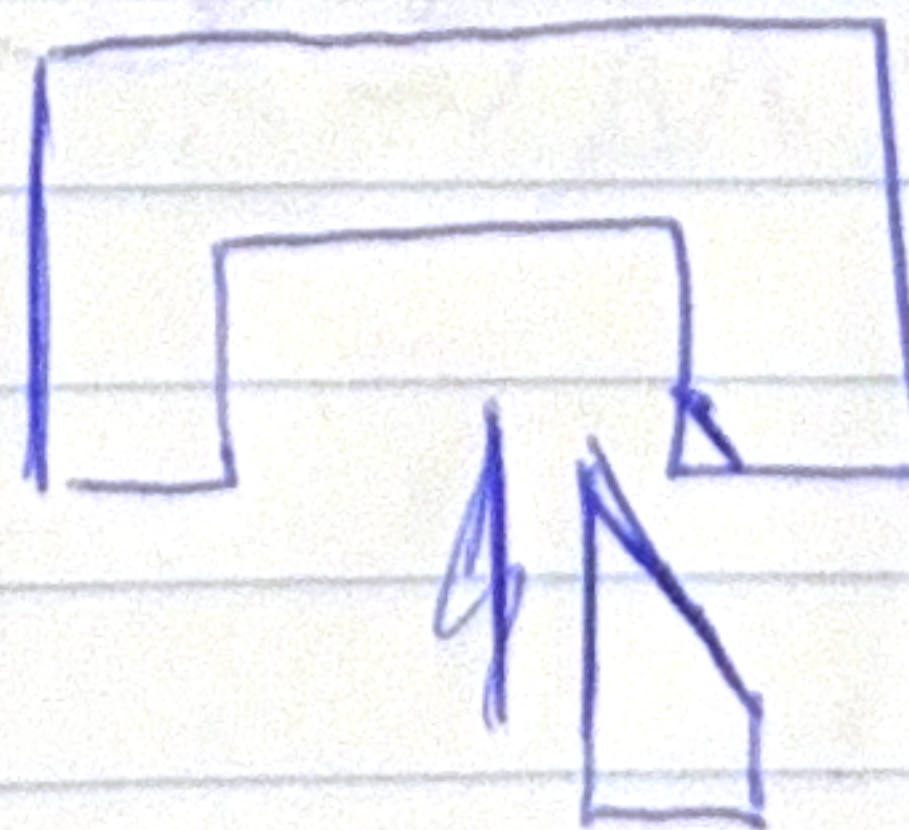
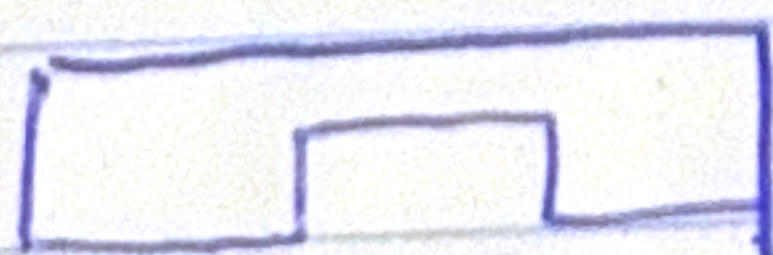
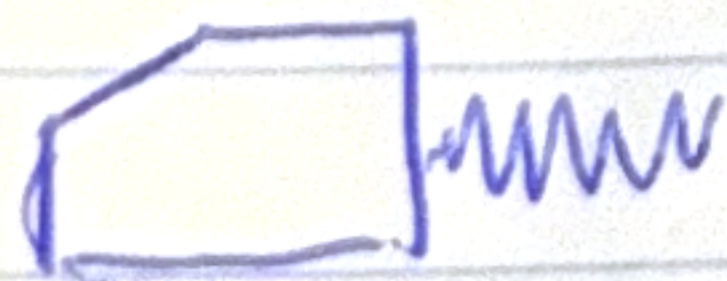


back slot  
@ back

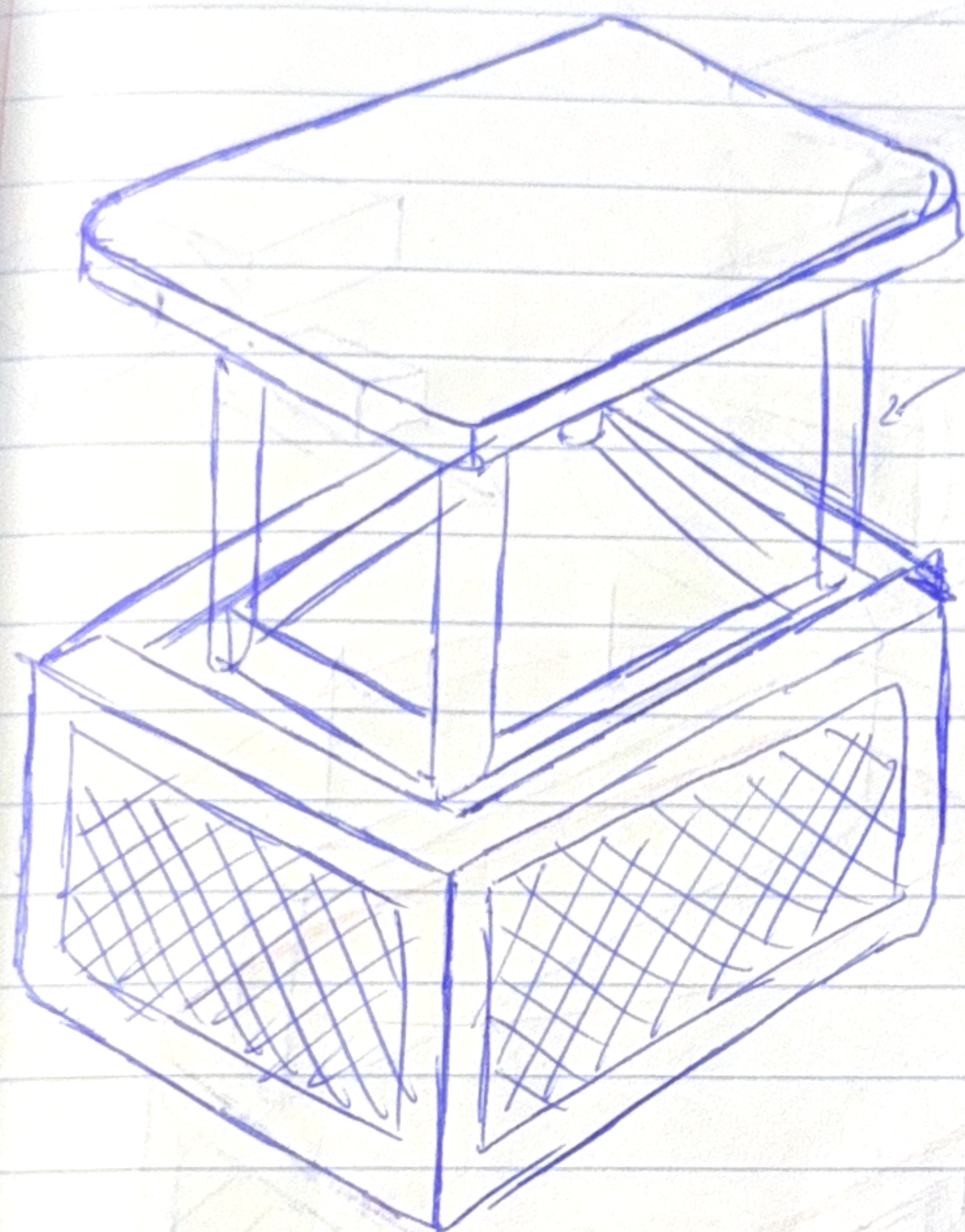


} needs to vary for a back =  
store glasses here instead

1 clip @ edge holds it up

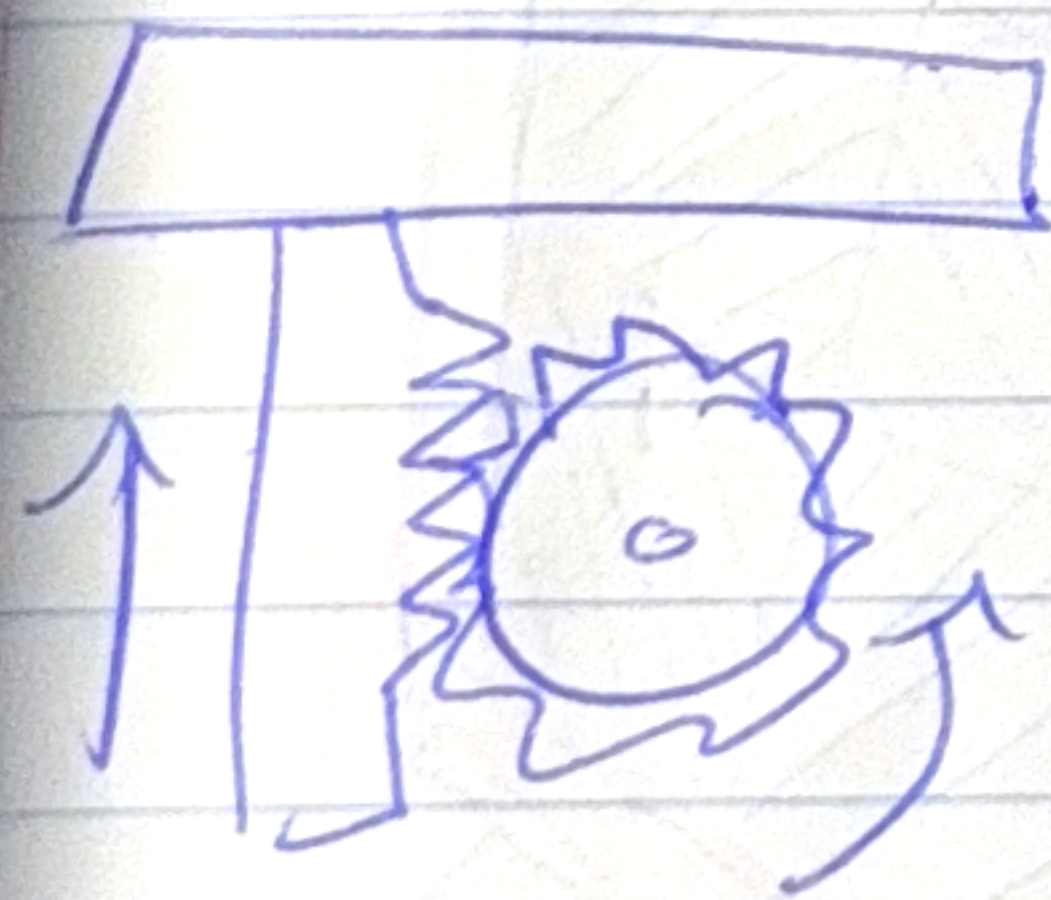




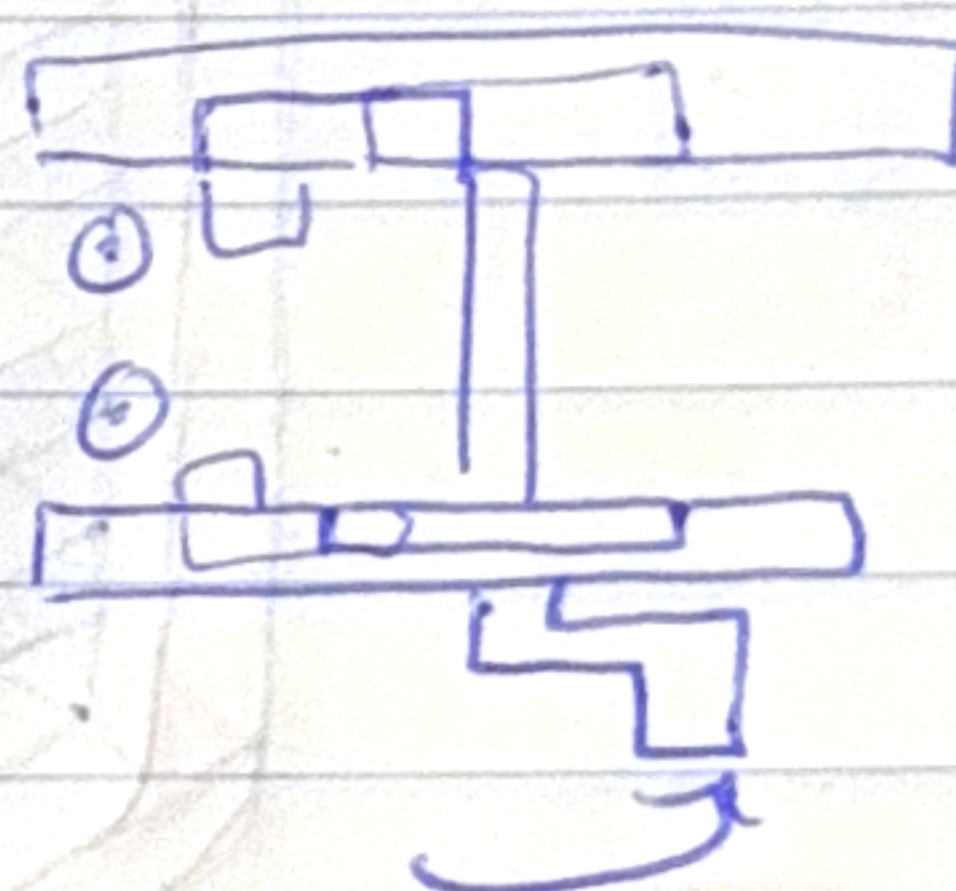


brass/nice looking tubes  
rack/pinion?

push down bits for  
coasters



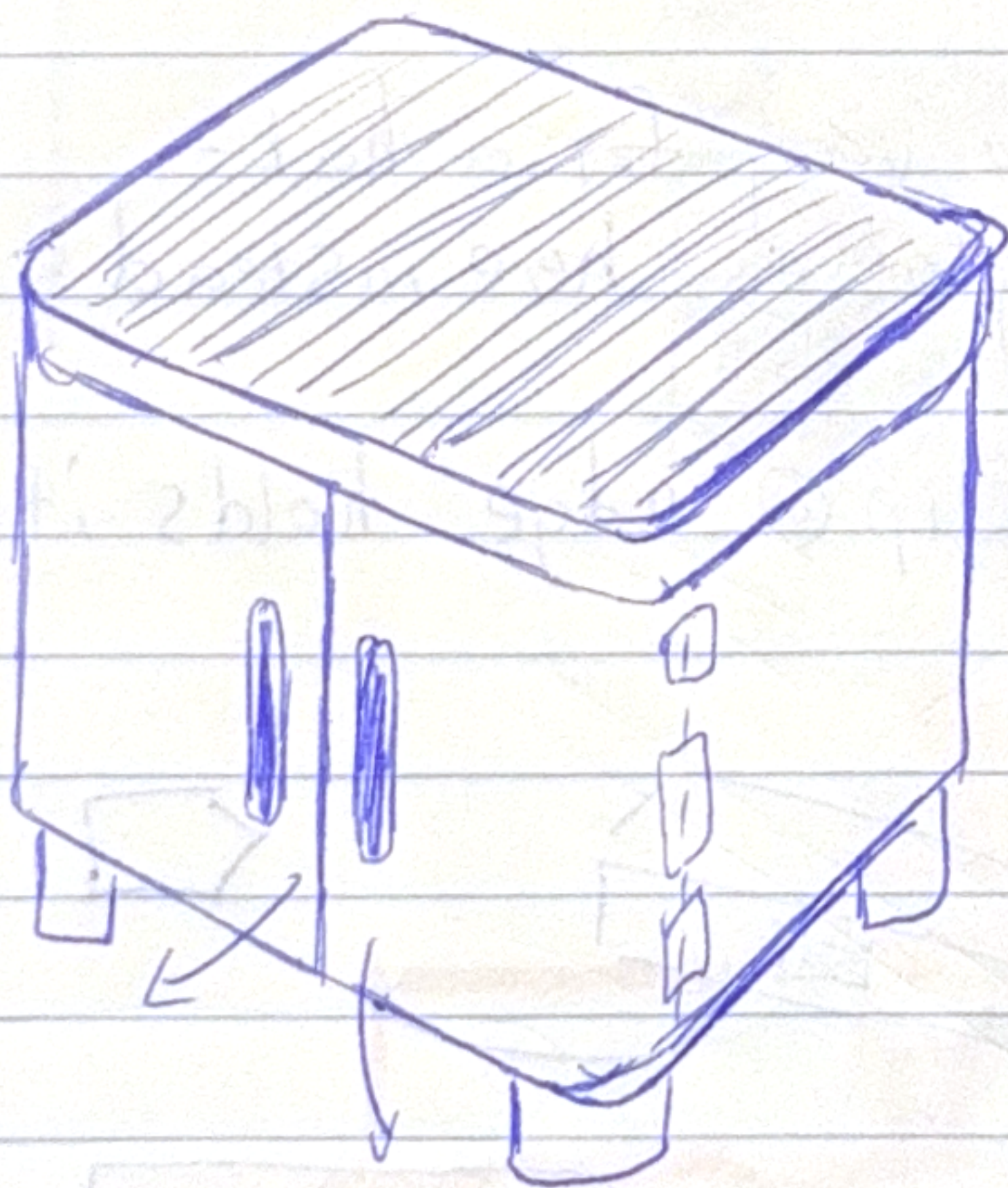
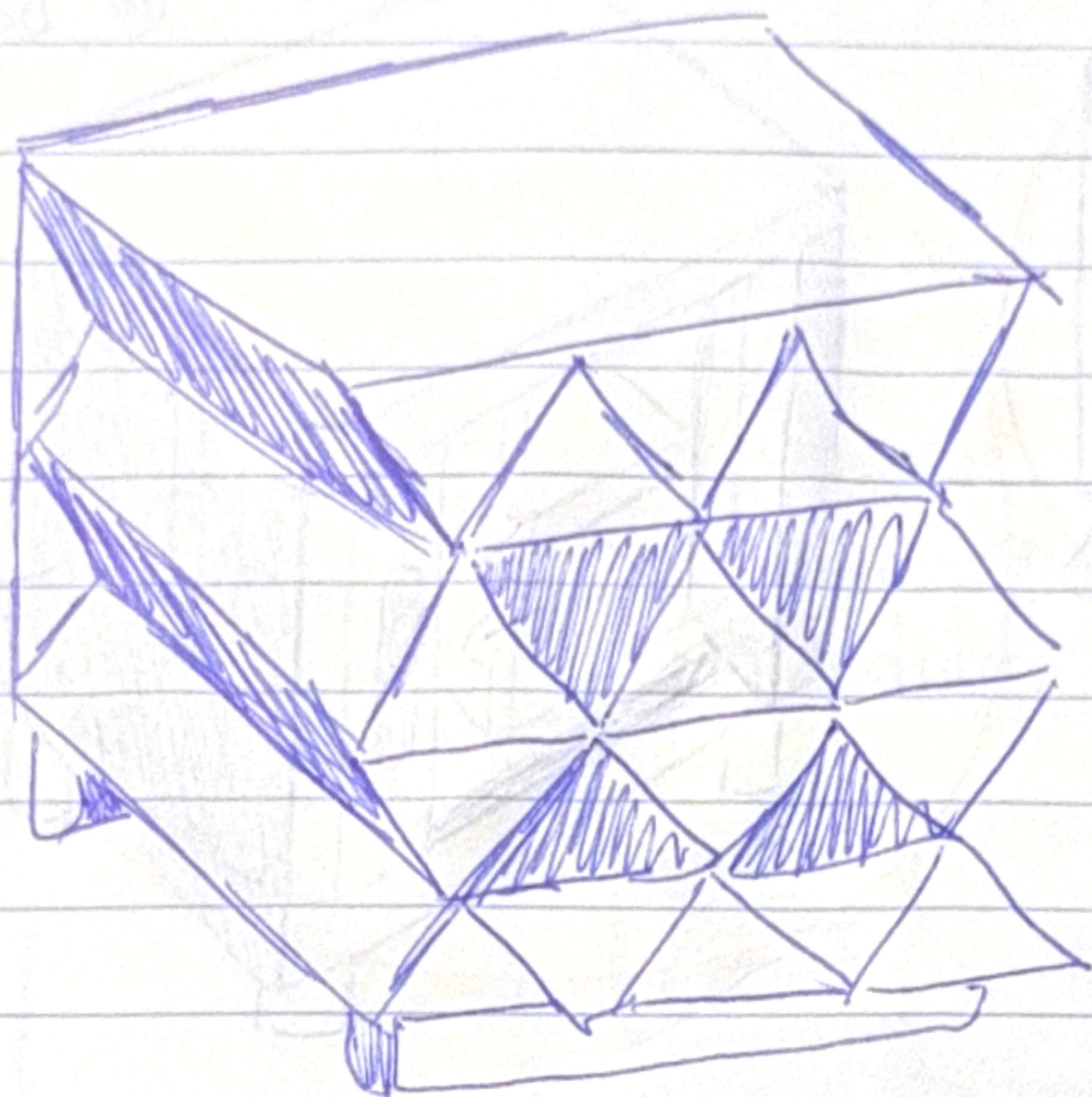
→ correct



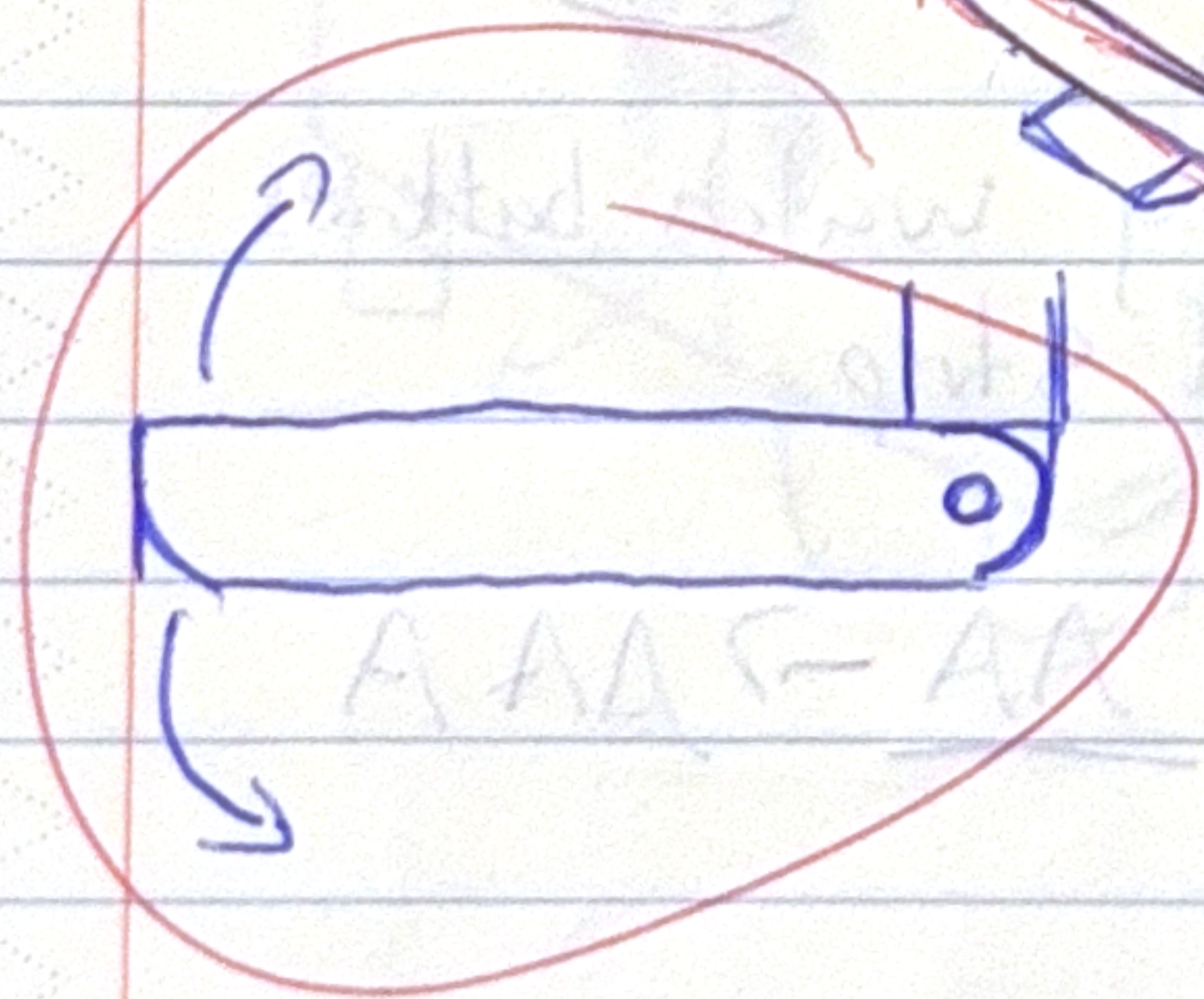
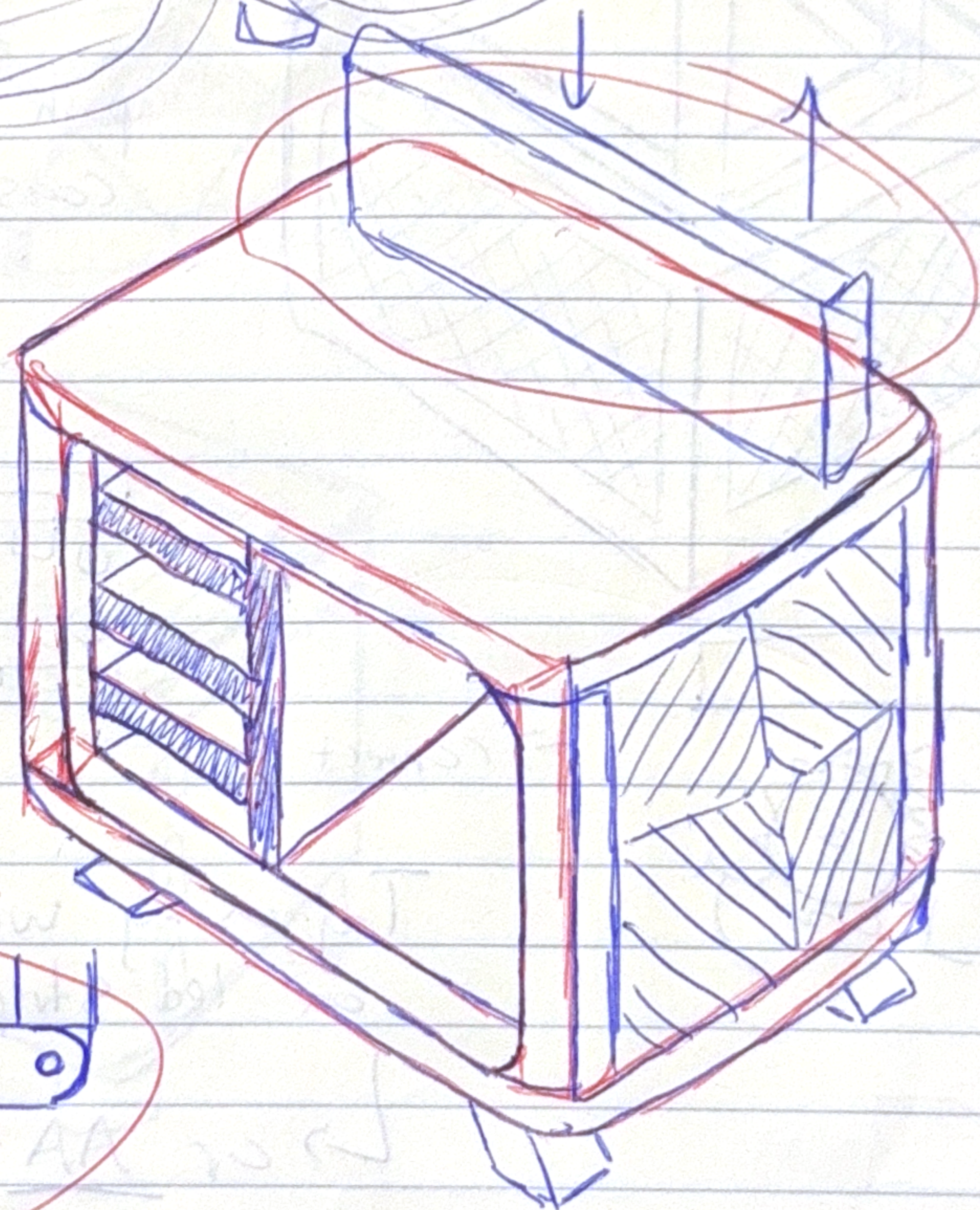
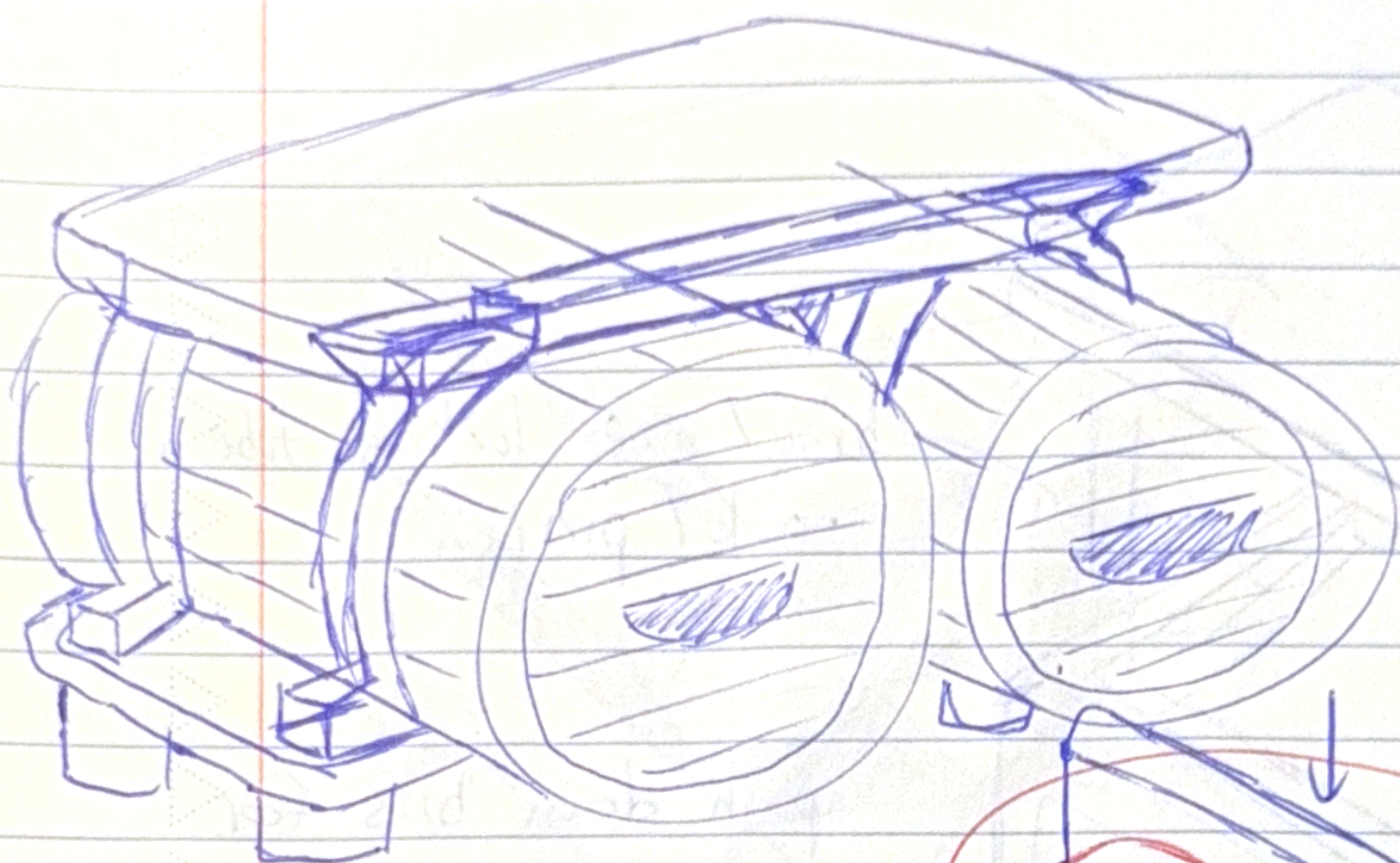
Try using watch batteries  
on led strip

↳ or AA → AAA





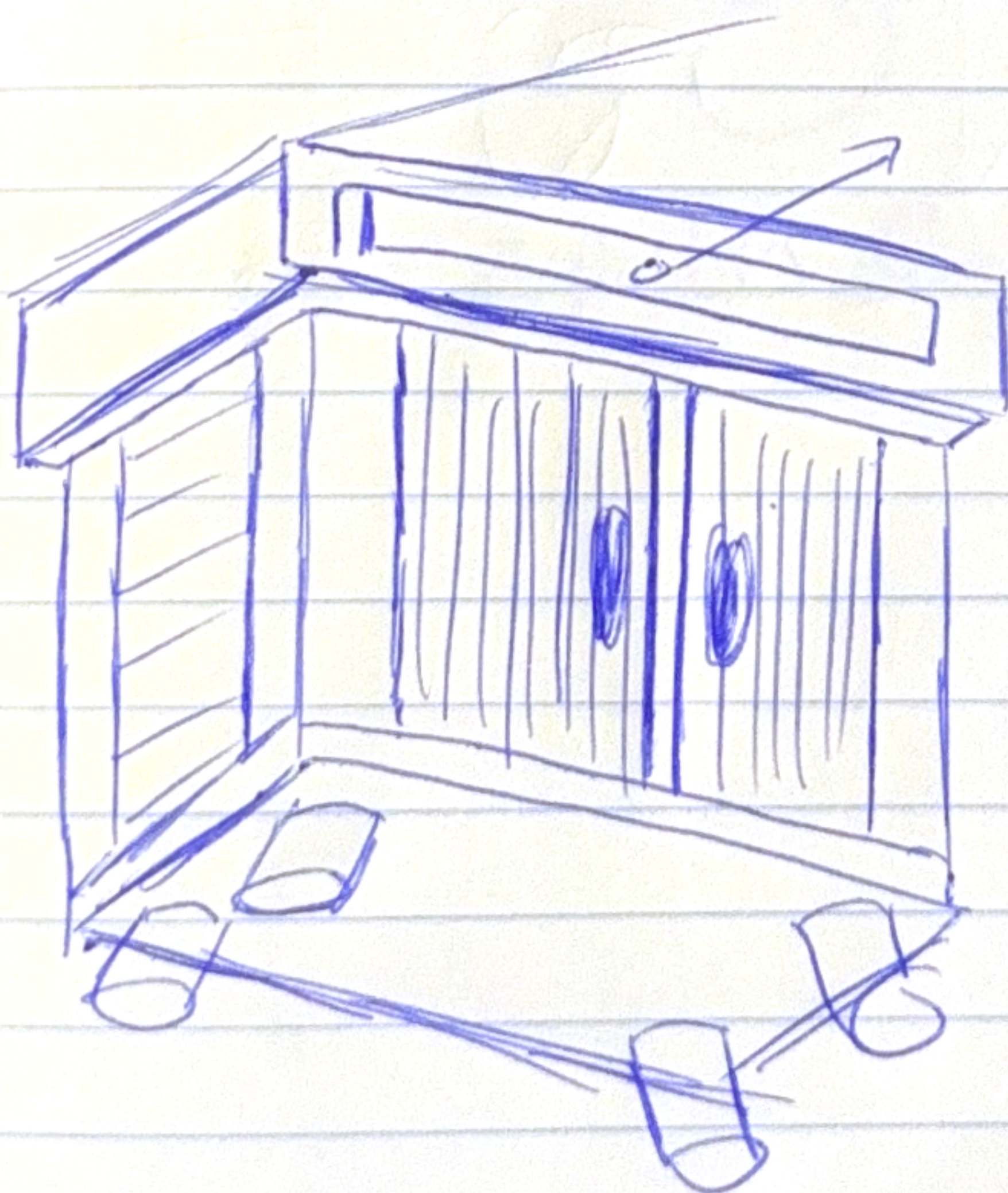






run outlets  
into the back  
of it

↳ and a plug on a  
spring (tape measure /  
ceiling device look up) — plug = horizontal



laser-  
cut  
wooden  
springs?

