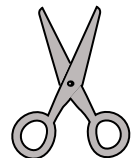
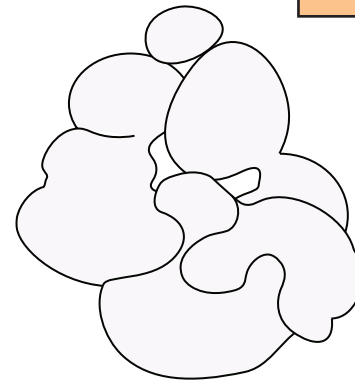
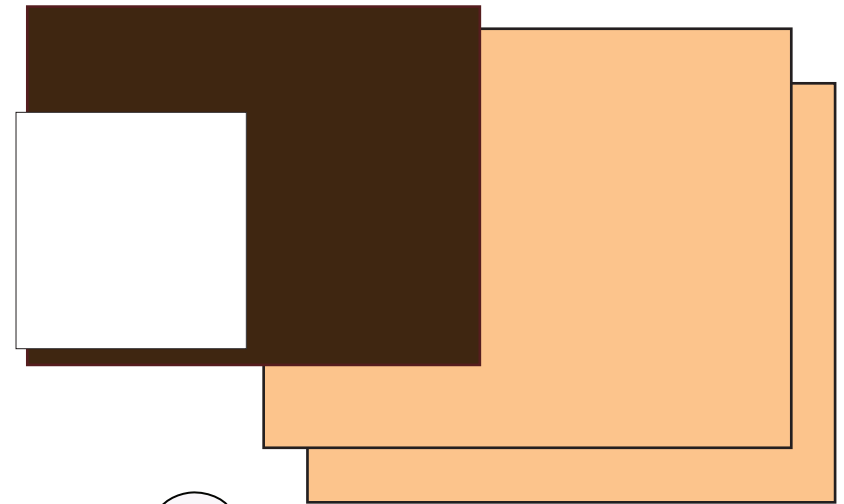




TAKE & MAKERSPACE

DESIGN ART CIRCUITS ENGINEERING TAKE LEARN SCIENCE CREATE PROJECTS CREATIMY MAKE STEM HOME
CRAFTDESIGN ART CIRCUITS ENGINEERING TAKE LEARN SCIENCE CREATE PROJECTS CREATIMY MAKE STEM
HOME CRAFT DESIGN ART CIRCUITS ENGINEERING TAKE LEARN SCIENCE CREATE PROJECTS CREATIMY MAKE

NO SEW! POP TART PILLOW s'mores edition



SUPPLIES IN KIT:

- 2 pieces of beige felt (21"H x 27"W-crust)
- 1 piece of brown felt (18"H X 23"W-frosting)
- 1 piece of white felt (8.5"H X 11"W-top frosting)
- hot glue gun

SUPPLIES YOU WILL NEED:

- Polyester stuffing/Pillow
- Ruler/measuring tape
- Marker/pencil
- Fabric scissors
- Straight pins

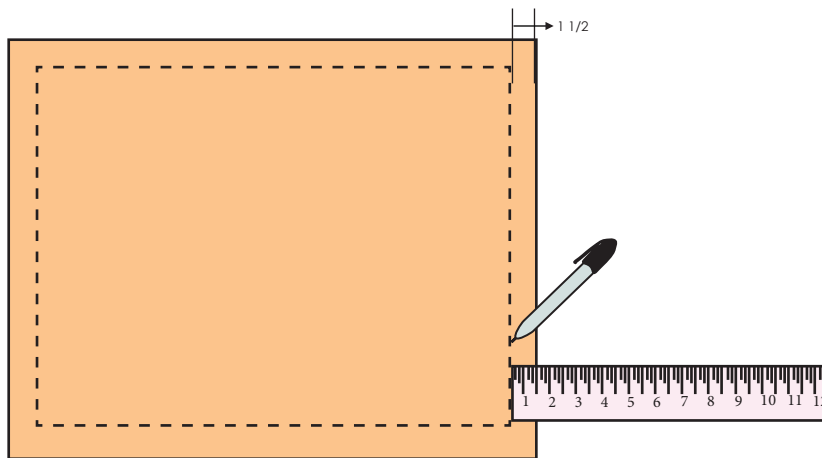


TAKE & MAKERSPACE

DESIGN ART CIRCUITS ENGINEERING TAKE LEARN SCIENCE CREATE PROJECTS CREATIMY MAKE STEM HOME CRAFTDESIGN ART CIRCUITS ENGINEERING TAKE LEARN SCIENCE CREATE PROJECTS CREATIMY MAKE STEM HOME CRAFT DESIGN ART CIRCUITS ENGINEERING TAKE LEARN SCIENCE CREATE PROJECTS CREATIMY MAKE

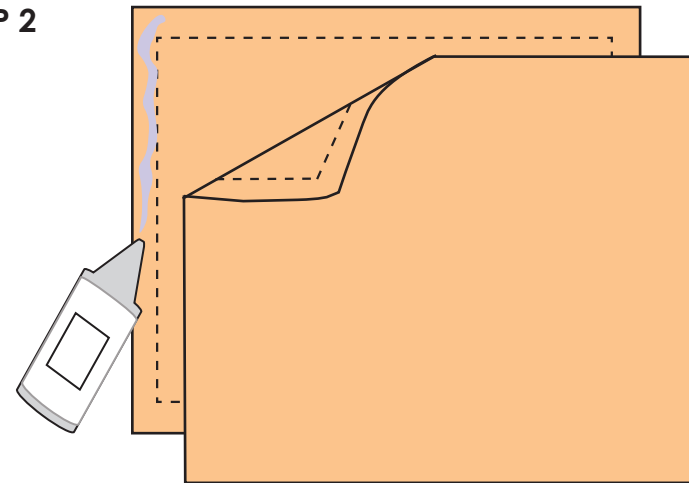
NO SEW! POP TART PILLOW s'mores edition

STEP 1



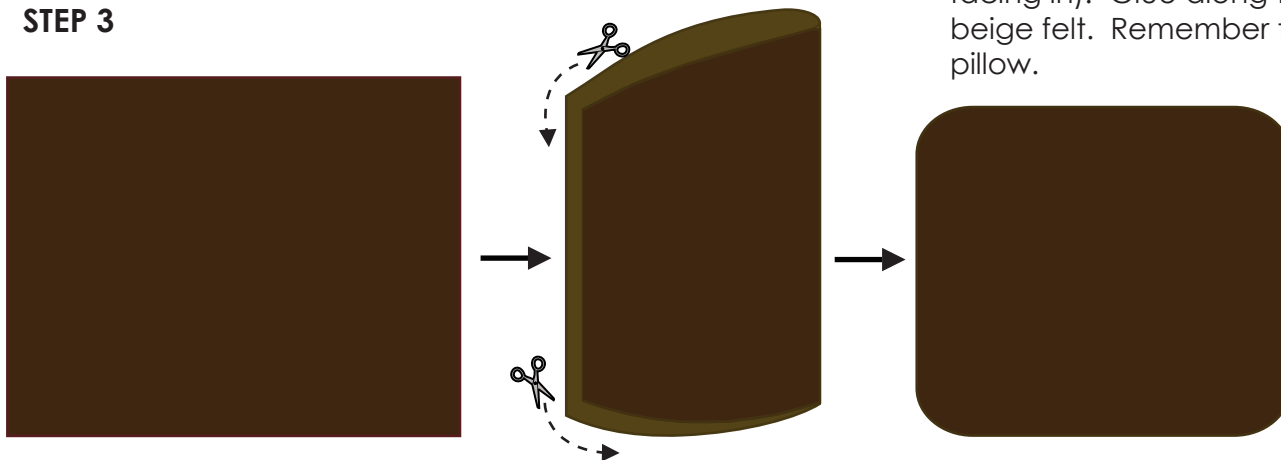
Measure and draw out a 1 1/2" guide around both pieces of "crust" beige felt.

STEP 2



Place the two beige felt rectangles facing in (marker measurements facing in). Glue along the 1 1/2" guide on three sides of the "crust" beige felt. Remember to leave one side open so you can stuff your pillow.

STEP 3



STEP 3

Fold the "frosting" brown felt in half. Cut and round off the two square corners on the opposite side of the folded edge. Do not cut on the folded edge. Once you have cut and unfolded the brown felt it should look like the third image on the left.

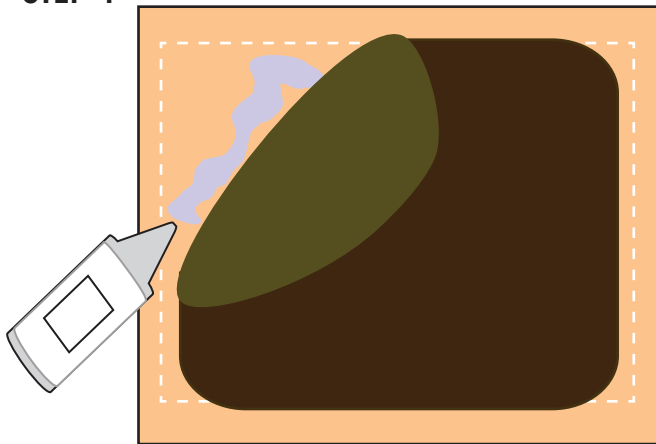


TAKE & MAKERSPACE

DESIGN ART CIRCUITS ENGINEERING TAKE LEARN SCIENCE CREATE PROJECTS CREATIVITY MAKE STEM HOME
CRAFT DESIGN ART CIRCUITS ENGINEERING TAKE LEARN SCIENCE CREATE PROJECTS CREATIVITY MAKE STEM
HOME CRAFT DESIGN ART CIRCUITS ENGINEERING TAKE LEARN SCIENCE CREATE PROJECTS CREATIVITY MAKE

NO SEW! POP TART PILLOW s'mores edition

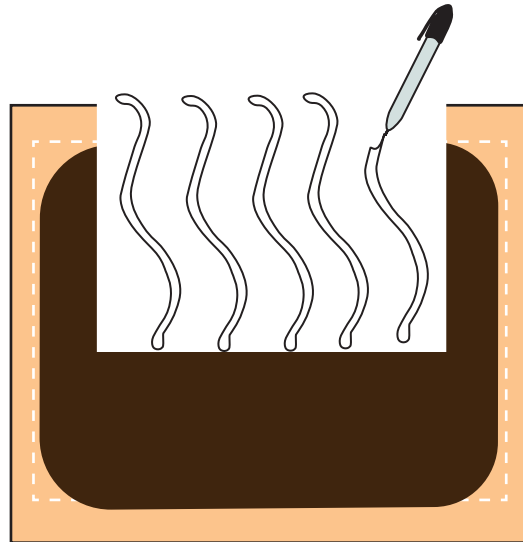
STEP 4



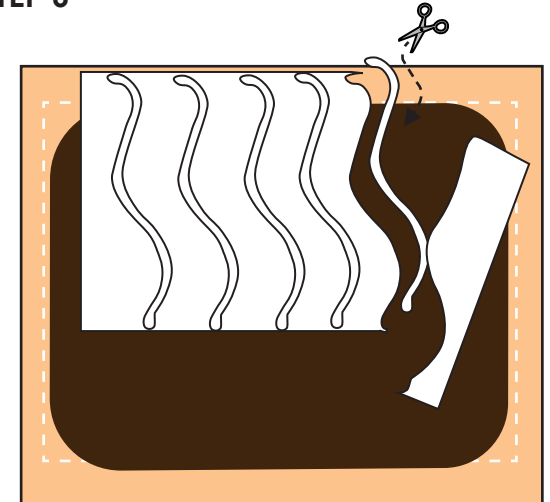
Glue the brown felt "frosting" to the top of the "crust" beige felt. Try to center the brown felt as best as you can.

STEP 5

On the white felt, draw wavy lines to mimic the top frosting on a S'mores pop tart.



STEP 6



Cut the wavy lines out of the white "top frosting" felt. *Save the scraps from the white felt for Step 10.

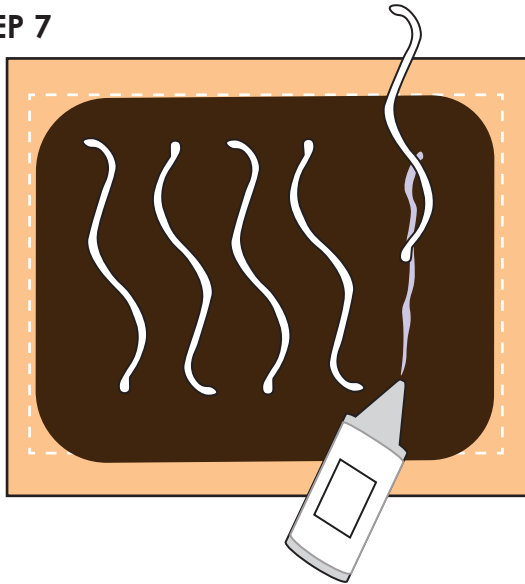


TAKE & MAKE RSPACE

DESIGN ART CIRCUITS ENGINEERING TAKE LEARN SCIENCE CREATE PROJECTS CREATIMY MAKE STEM HOME
 CRAFTDESIGN ART CIRCUITS ENGINEERING TAKE LEARN SCIENCE CREATE PROJECTS CREATIMY MAKE STEM
 HOME CRAFT DESIGN ART CIRCUITS ENGINEERING TAKE LEARN SCIENCE CREATE PROJECTS CREATIMY MAKE

NO SEW! POP TART PILLOW s'mores edition

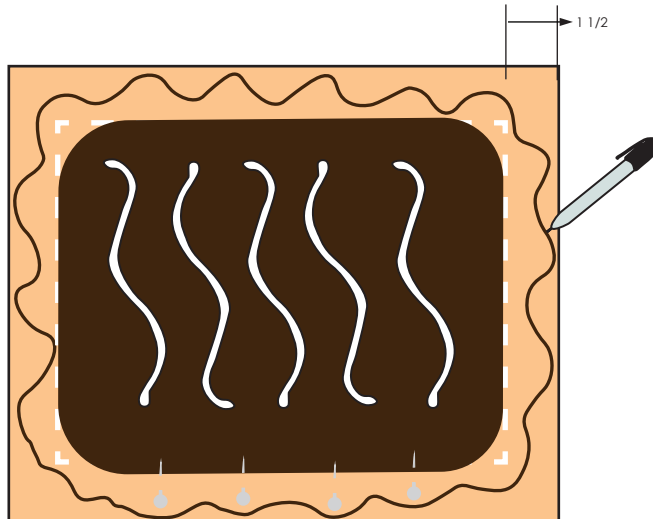
STEP 7



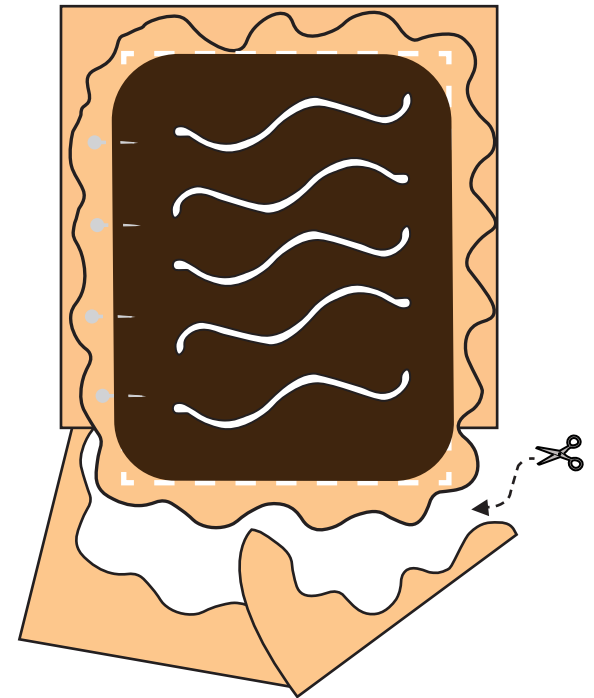
Glue the wavy lines on top of the brown "frosting" felt.

STEP 8

On the beige felt, draw a wavy line near the edge of the rectangle that looks like the shape of pop tart crust.



STEP 9



Follow and cut around the wavy line, stay near the edge of the rectangle.
 Tip Pin the side that is not glued together so it does not move around while you cut the felt.

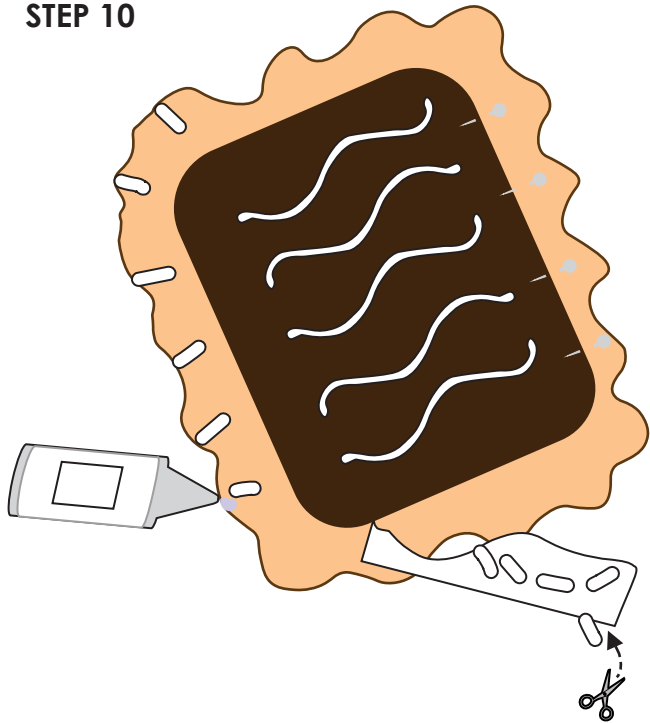


TAKE & MAKE RSPACE

DESIGN ART CIRCUITS ENGINEERING TAKE LEARN SCIENCE CREATE PROJECTS CREATIMY MAKE STEM HOME
CRAFTDESIGN ART CIRCUITS ENGINEERING TAKE LEARN SCIENCE CREATE PROJECTS CREATIMY MAKE STEM
HOME CRAFT DESIGN ART CIRCUITS ENGINEERING TAKE LEARN SCIENCE CREATE PROJECTS CREATIMY MAKE

NO SEW! POP TART PILLOW s'mores edition

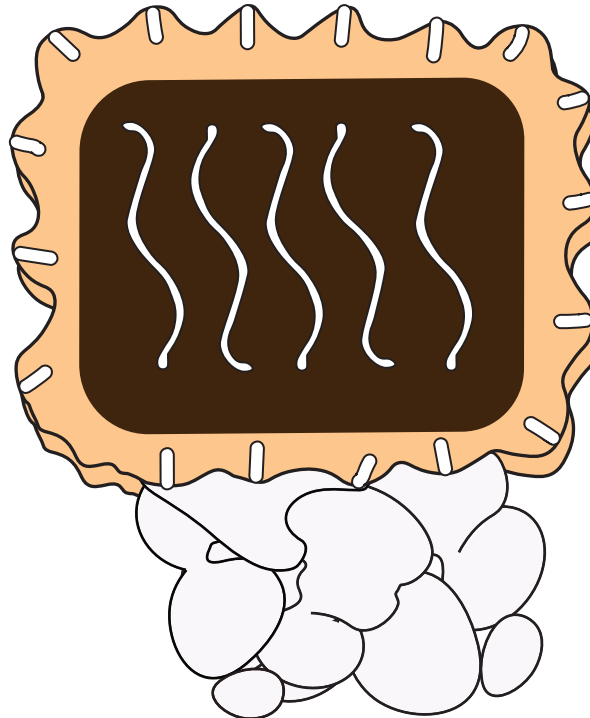
STEP 10



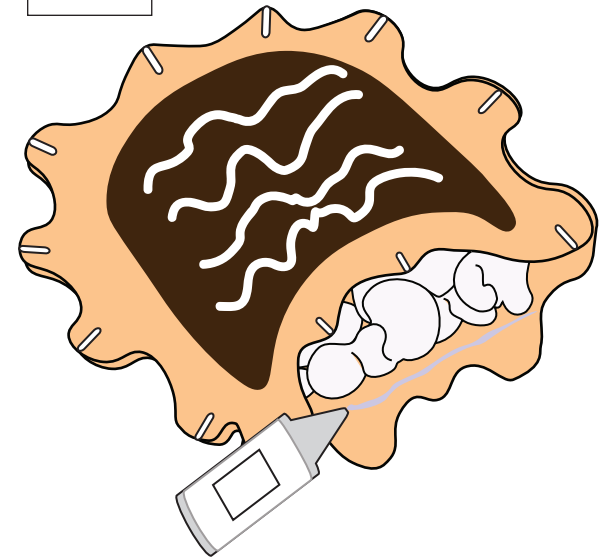
Cut out thick lines or triangles from the scraps of your white felt. Glue the pieces along the wavy border of the beige felt, these are fork marks that you see on pop tart pastries. Yummy!

STEP 11

It is time to fill the pop tart with stuffing!! Remove the pins, fill up and stuff the felt with stuffing or a pillow. Push stuffing into the inside corners of the pop tart.



STEP 12



Glue the final seam by lining up the two edges of the beige felt and pressing the two pieces firmly together. Make sure the stuffing is nicely tucked inside of the felt.

CONGRATULATIONS!!
YOUR POP TART PILLOW IS COMPLETE.
SHARE YOUR PROJECT ON SOCIAL MEDIA
USING
HASHTAG#JOCOMAKES