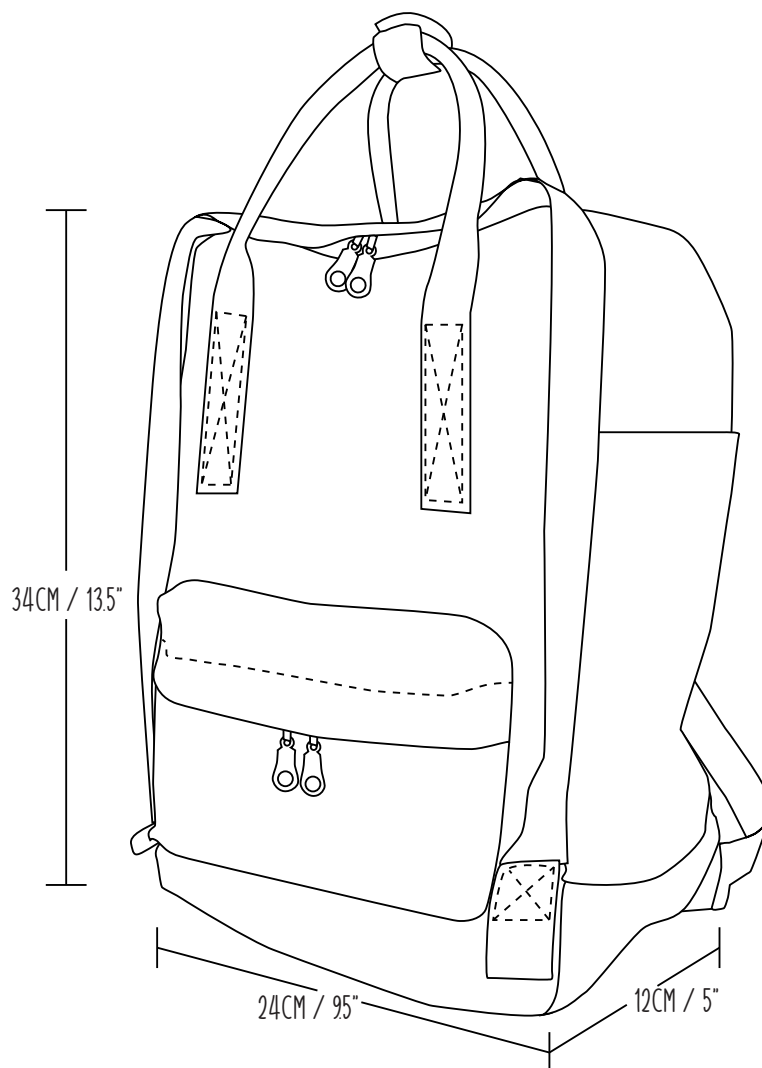


# BECKY STERN'S **BASIC BACKPACK**



INSTRUCTIONS VERSION 5

# WELCOME

The final bag dimensions are 34cm tall by 24 cm wide by 12cm deep (13.5 inches tall by 9.5 inches wide by 5 inches deep). You can find these same instructions, as well as a video tutorial, on my website: [beckystern.com/backpack](http://beckystern.com/backpack)

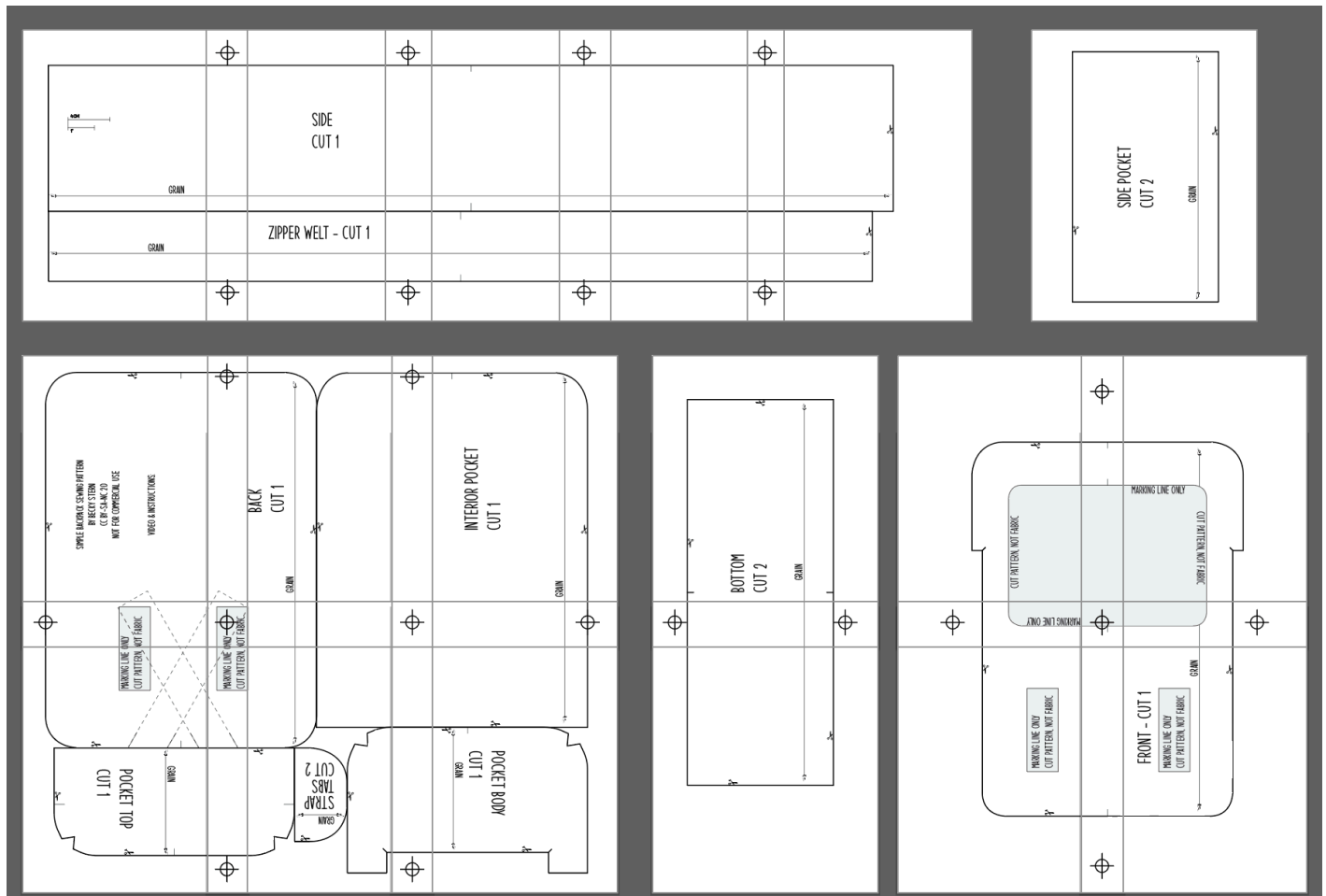
This pattern and these instructions are licensed for personal use only. If you wish to run a paid workshop/class with this pattern, you must purchase a commercial license. Copyright law is such that I can't stop you from selling the bags you make with this pattern, but the polite thing to do is buy a commercial license if you're turning a profit. Please reach out with any questions or to report being charged for this pattern by someone other than me: [contact@beckystern.com](mailto:contact@beckystern.com)

## SUPPLIES

Cotton canvas fabric (10 oz weight, 1 yard)	Matching thread	Paper scissors
1" poly webbing (145 inches / 370 cm)	Snap kit and hammer	Tape (scotch or masking)
Cotton sash rope (optional)	Tailor's chalk	Iron
1" Rectangle loops (2x)	Fabric scissors	Ironing board
1" Triglide slides (2x)	Sewing machine	Sewing pins or clips
Cut-your-own zipper (39 inches / 100 cm)	Lighter (for singeing webbing edges)	Measuring tape
with add-your-own zipper pulls (4x)	Printer and paper for pattern	Fabric wax (optional)

## PRINT AND TAPE TOGETHER PATTERN

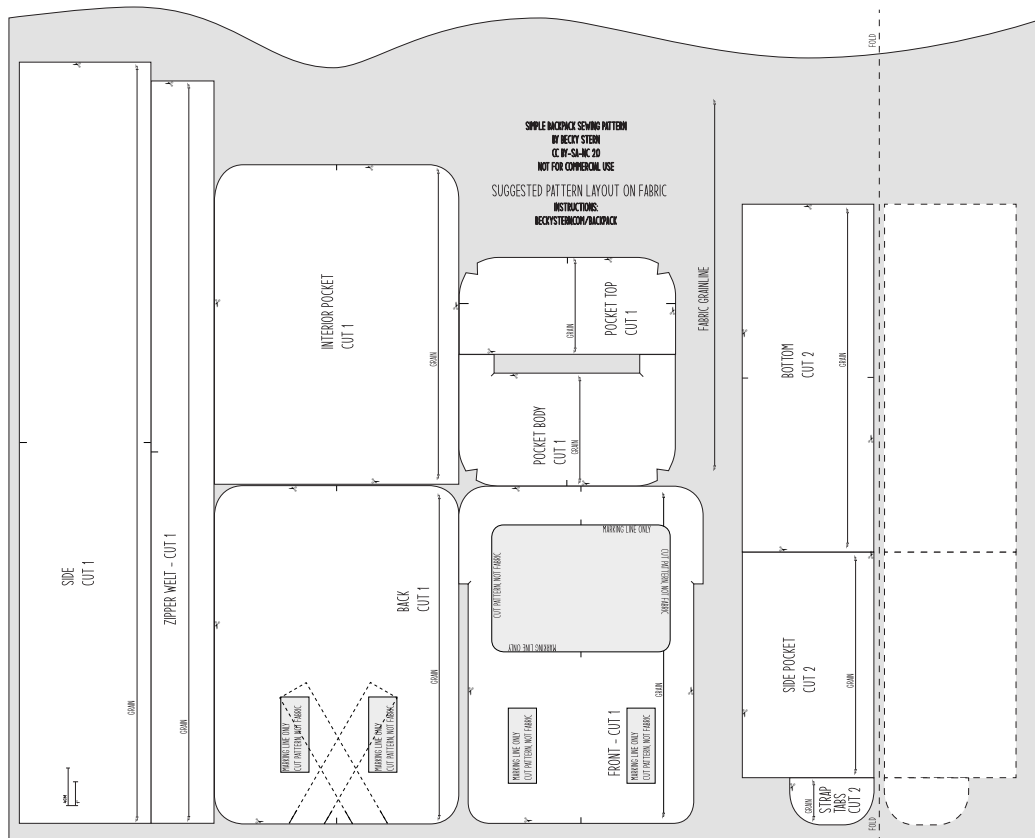
Print the tiled pattern file at 100% scale on US letter or A4 paper. Use the registration marks to line up the pages as shown in this layout diagram, and tape them together. Cut out pattern pieces, including interior cutouts as shown on front and back panel pattern pieces. You can skip this step if you're using a sewing projector, for which a separate file has been included.



# CUT OUT PIECES

Fabric should be at least 45 inches / 115cm wide. 1/4" / 6mm seam allowance is already included. Pin pattern pieces to the fabric.

Do not cut center marks. For the pieces that require two of each (bottom, side pocket, and strap tabs), you can either fold the fabric over before cutting or cut a second set separately.

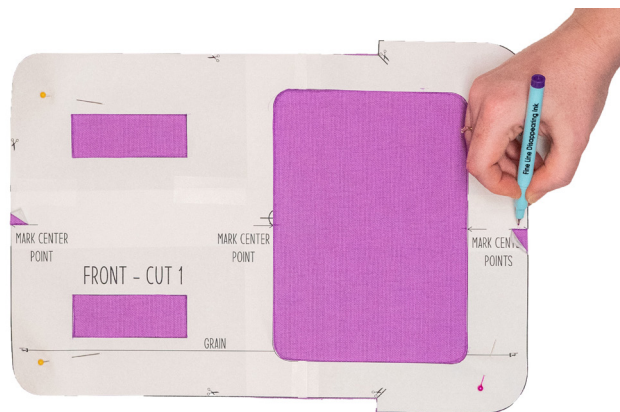




# MARK PIECES

Use tailor's chalk, marking pen, or pins to transfer markings to fabric:

- Front pocket location
- Front strap locations
- Back strap locations
- Center points as labeled



# COLLECT & CUT NOTIONS

Material	Quantity	Length Imperial	Length Metric	Label
1" webbing Front strap	1	20 inches	50cm	1
1" webbing Back strap	1	108 inches	275cm	2
1" webbing Zipper welt tabs	2	6 inches	15cm	3
1" webbing Back strap bottom tabs	2	3 inches	8cm	4
1" webbing Strap connector larger	1	4 inches	10cm	5
1" webbing Strap connector smaller	1	1.5 inches	4cm	6
Cotton sash rope (optional)	2	15 inches	38cm	7
Zipper main compartment	1	31 inches	78cm	8
Zipper smaller compartment	1	7.5 inches	19cm	9
1" Rectangular metal loops	2			10
1" Triglidge slides	2			11
Snap	1			12
Zipper pulls	4			13

When preparing lengths of poly webbing, use a lighter to singe the cut edges so they don't fray. Use caution, as the melted webbing will be hot and sticky for a few moments after heating, and could burn you and/or surfaces. If using cotton webbing (which doesn't melt), add 2cm to each piece to allow for a 1cm hem on each end to finish the edge. If your webbing is on the thicker side, you may wish to omit the cotton sash rope, since the handles won't need any extra bulking.





# IRON THESE PIECES

1. Strap tabs (flat side edge  $\frac{1}{2}$ " / 13mm, then in half)
2. Inner pocket (top edge folded  $\frac{1}{2}$ " / 13mm, then 1" / 25mm)
3. Side pockets (top edges folded  $\frac{1}{2}$ " / 13mm, then 1" / 25mm)
4. Outer pocket top (straight edge 2" / 5cm, to mark)
5. Zipper welt (in half lengthwise)



# SEW STRAP TABS

Fold webbing in half around one long side of each rectangular metal loop. Sandwich the webbing inside the fold of a strap tab fabric pattern piece, and stitch across the edge twice. Optionally also stitch a box with an X in it.





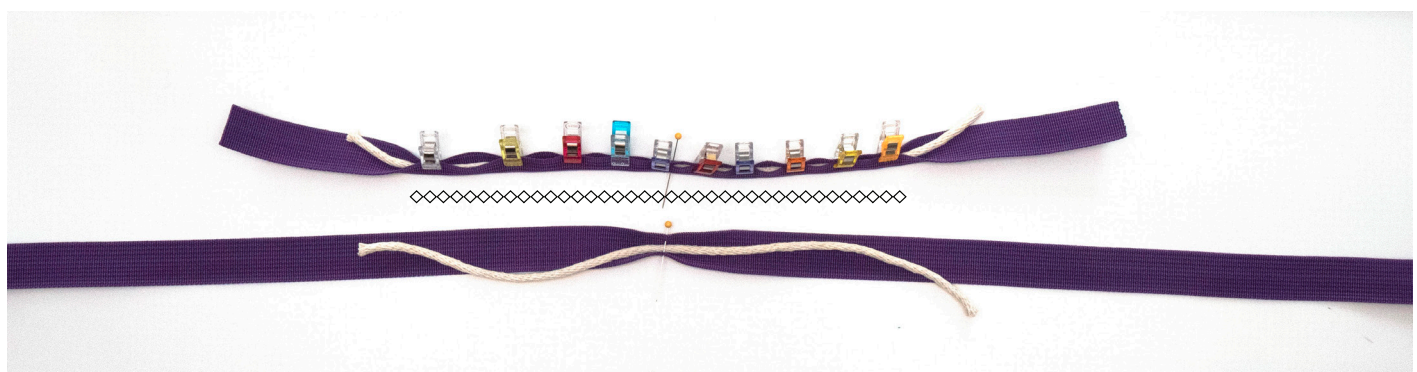
# PREPARE STRAP ATTACHMENT

Stitch the smaller piece of webbing to the larger piece as shown. Install snap pieces at each end.



# SEW THE STRAP HANDLES

Fold straps and ropes in half to find and align their midpoints. Fold webbing lengthwise around rope and pin or clip in place. Stitch the webbing closed along the center 13 inches/ 33cm of the straps using a zigzag stitch.







Thread the longer back strap through the strap attachment.

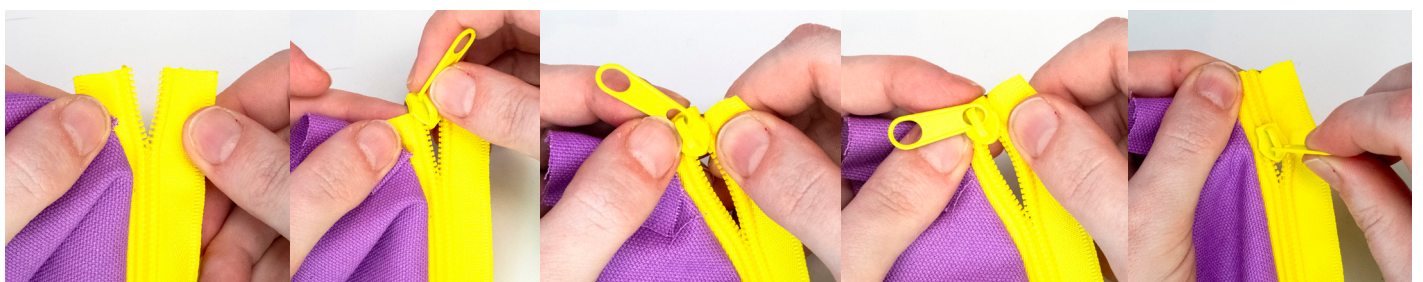
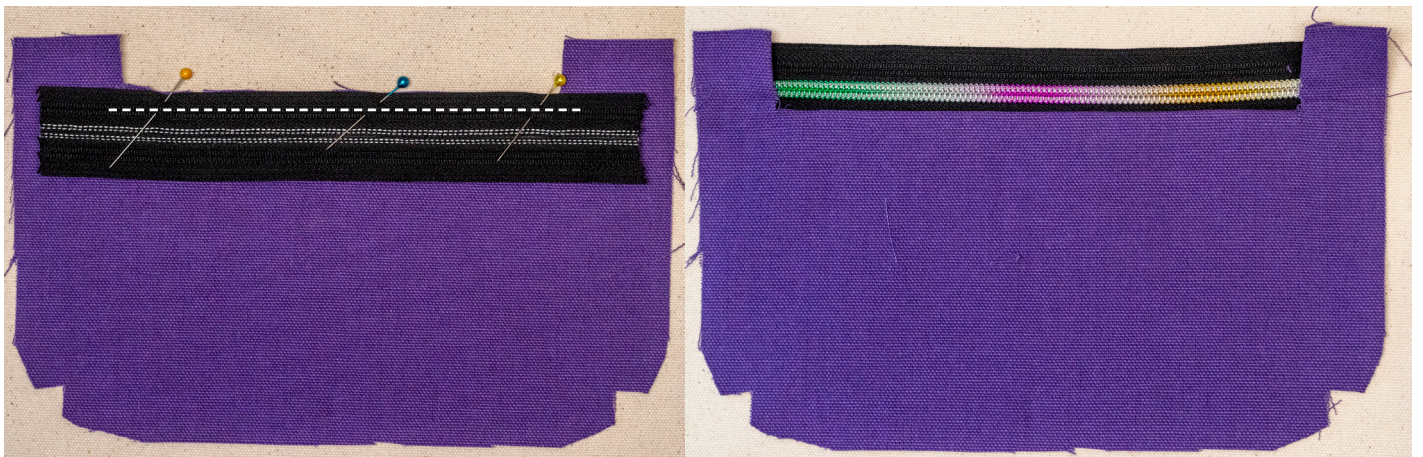
## HEM THESE POCKET PIECES

Stitch twice across the top edges of the pockets that you ironed earlier: the inner pocket and the two outer side pockets.



## SEW FRONT POCKET

Pin and stitch the front pocket zipper to the pocket bottom fabric with right sides together as shown. Flip right side out and press, then topstitch, along the zipper's bottom edge.

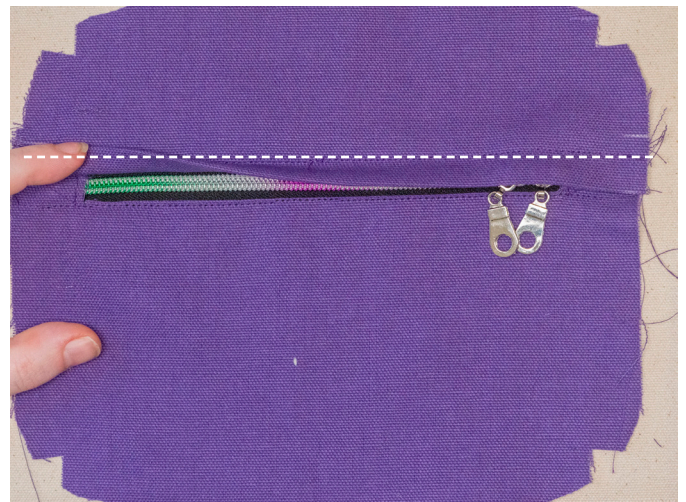
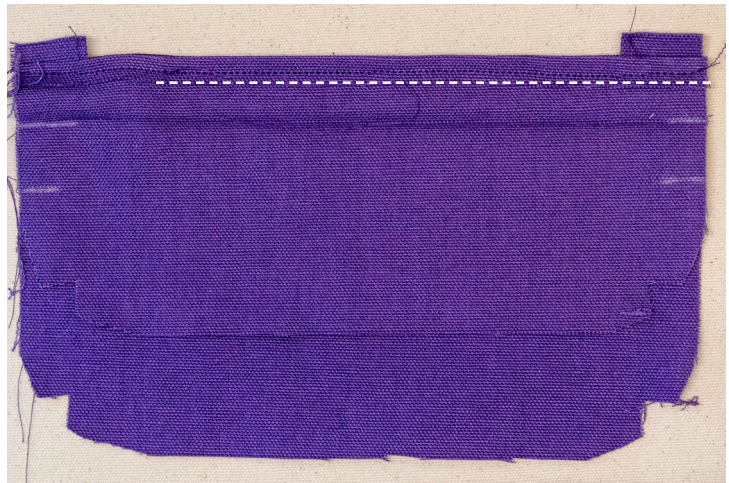
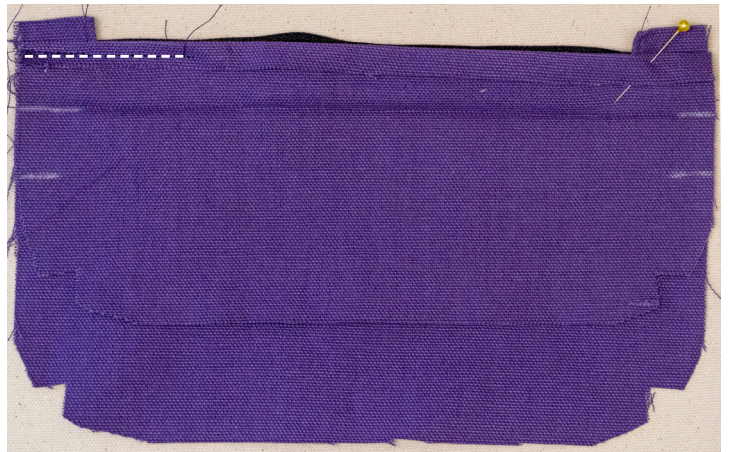
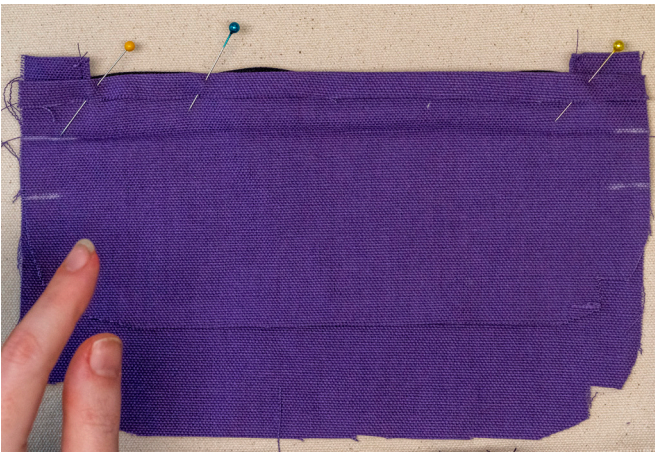






Add zipper pulls, then topstitch the remaining tabs across the zipper ends.

Pin and the front pocket top in place along the zipper edge. Stitch partway across the seam as shown below. Then move the zipper pulls to the area that has been stitched before stitching the rest of the zipper/topflap seam. This method avoids having to sew around the bulky zipper pulls, which would inevitably wobble your seam. Next, topstitch the zipper welt, using the same stitch-slide-stitch method to avoid the zipper pulls.





Then move on to the corner darts. Fold each corner with right sides together and pin and stitch the darts as shown. Finally, fold over and pin the raw edge of the pocket.



## ASSEMBLE FRONT

Align the pocket with the marking on the front panel, and re-pin the edge to secure it to the front panel. Topstitch the pocket in place all the way around where you pinned. Next, pin the front strap ends in place at the smaller markings on the front panel, then stitch them in place using a box pattern.



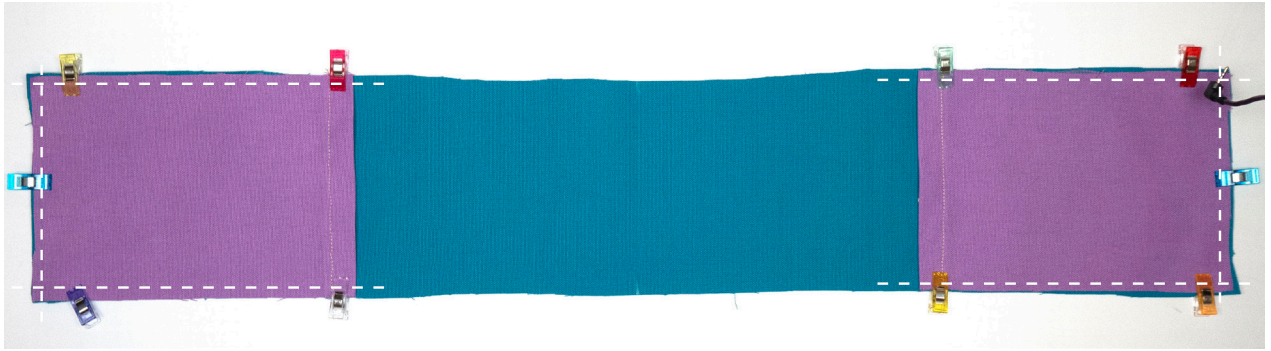
## SEW SIDES INCLUDING MAIN COMPARTMENT ZIPPER

Prepare the zipper welt by placing a doubled over tab of webbing at the end and stitching it in place as shown:

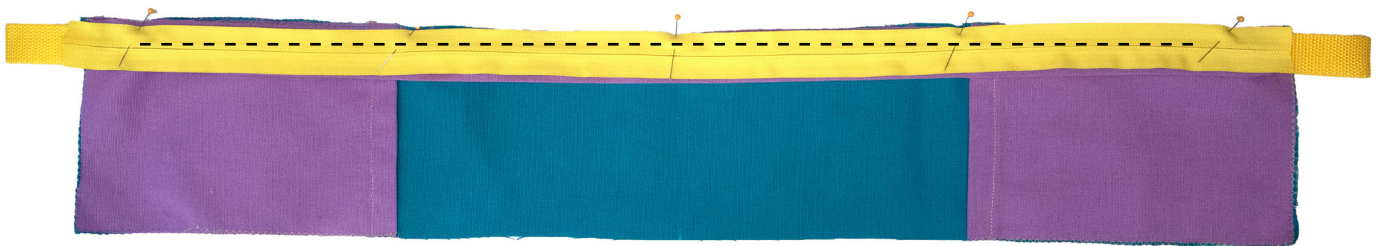




Stitch the side pockets to the ends of the side panels using a slightly smaller seam allowance.



Then sandwich the side/top panel (right side up), zipper welt, and main zipper (face down) along one edge, and stitch using a zipper foot along the main section of the seam, leaving 3 inches / 8cm at the ends loose for now.



Pin the other side of the zipper to the top and side edges of the front panel, starting at the top center to ensure the sides are symmetrical. Stitch along entire zipper as shown:

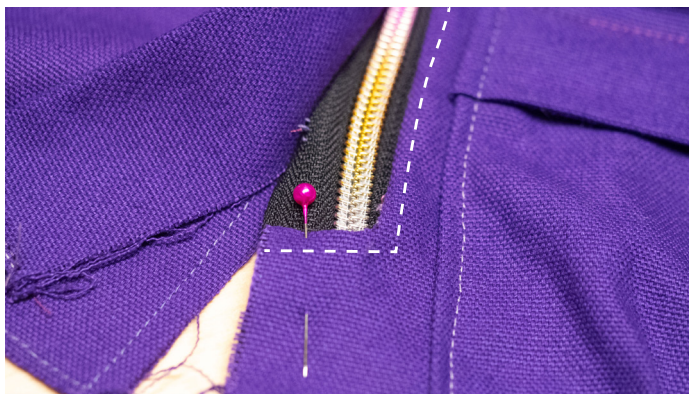


Next, add the zipper pulls.





Flip open and topstitch around the front.



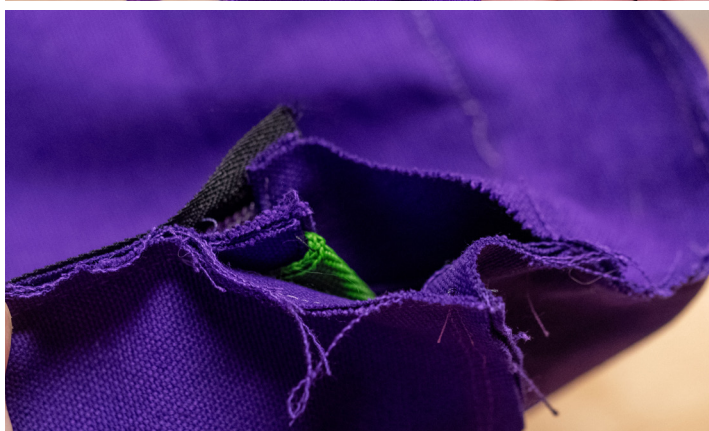
## SEW BOTTOM

Align both bottom pieces at the bottom center of the front panel.



Pin and stitch the bottom of the side pockets to the short edge of the bottom.

Close up the remaining side seams.





Flip to right side and topstitch outer perimeter.



## SEW BACK STRAPS & INNER POCKET

Box stitch back handle. Fold up and stitch edges most of the way around, but leave the ends for later.



Pin interior pocket.

Pin bottom strap tabs.

Stitch around the interior pocket and strap tabs using a smaller than your usual seam allowance.





## ATTACH BACK

With right sides together, pin back panel to back-pack body starting at the bottom center and top center. Stitch around the entire perimeter.

Open the main compartment zipper and turn backpack right side out. Topstitch around the perimeter, capturing the seam allowance on the inside, and the back straps on the outside. Finish top stitching the webbing where you left off earlier.



## FINISH STRAPS

Feed back straps through the triglide slides, then the rectangle loop, then around the center post of the triglide slide. Stitch webbing end to itself to secure.

